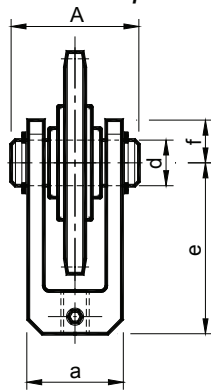
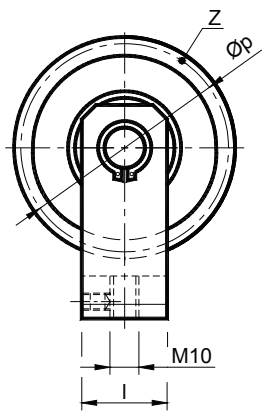


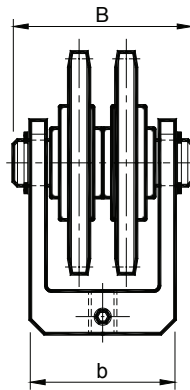
KIT per tendicatena / KIT for chain tighteners

Pignone in acciaio su forcella – Tipo: RR

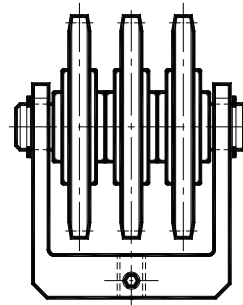
Sprocket made of steel on the fork – Type: RR



S.



D.



T.



MATERIALI La forcella è normalmente in alluminio, solo per le misure più grandi è in acciaio. Il cuscinetto, la corona dentata e il perno sono in acciaio.

TRATTAMENTI Forcella in alluminio sabbiato o acciaio verniciato. Corona e perno in acciaio zincato.

IMPIEGO Pignone folle su forcella. Il pignone è costituito da una corona in acciaio, montata su cuscinetti con base maggiorata nazionale.

A richiesta si possono fornire cuscinetti INA. I kit per catene triple, ASA, metrici o non unificati vengono eseguiti solo su richiesta.

Velocità di lavoro ≤60 m/min.

Temperatura di lavoro ≤100°C.

MATERIALS The fork is usually made of aluminium, only for bigger sizes it is made of steel. The bearing, the toothed crown and the pin are made of steel.

TREATMENTS Fork made of sandblasted aluminium or painted steel. Crown and pin made of galvanized steel.

USE Idle pin on the fork. The sprocket consists of a steel crown, installed on national enlarged bearings. On demand INA bearings can be supplied.

The KIT for triple chains, ASA, metric or not standard are made only on request.

Operating speed ≤60 m/min.

Operating temperature ≤100°C.

Tipo Type	Cod. N° S.	Cod. N° D.	Catena Chain	a	A	b	B	D	e	f	l	Øp	Z	Peso Weight in Kg	
														S.	D.
RR 10-1	ΔTB001353	ΔTB001363	3/8" x 7/32"	30	40	50	60	16	60	15	30	63.90	21	0.29	0.50
RR 20-1	ΔTB001353	ΔTB001363	3/8" x 7/32"	30	40	50	60	16	60	15	30	63.90	21	0.29	0.50
RR 10-2	ΔTB001354	ΔTB001364	1/2" x 5/16"	30	40	50	60	16	60	15	30	73.14	18	0.37	0.65
RR 20-2	ΔTB001354	ΔTB001364	1/2" x 5/16"	30	40	50	60	16	60	15	30	73.14	18	0.37	0.65
RR 30-2	ΔTB001354	ΔTB001364	1/2" x 5/16"	30	40	50	60	16	60	15	30	73.14	18	0.37	0.65
RR 30-3	ΔTB001355	ΔTB001365	5/8" x 3/8"	35	45	55	65	16	70	15	30	86.39	17	0.54	0.98
RR 40-3	ΔTB001355	ΔTB001365	5/8" x 3/8"	35	45	55	65	16	70	15	30	86.39	17	0.54	0.98
RR 30-4	ΔTB001356	ΔTB001366	3/4" x 7/16"	35	45	55	65	16	70	15	30	91.63	15	0.65	1.20
RR 40-4	ΔTB001356	ΔTB001366	3/4" x 7/16"	35	45	55	65	16	70	15	30	91.63	15	0.65	1.20
RR 40-5	ΔTB001357	○TB001367	1" x 17.02mm	35	45	67	78	20	77.5	17.5	40	98.14	12	1.00	2.33
RR 50-5	ΔTB001357	○TB001367	1" x 17.02mm	35	45	67	78	20	77.5	17.5	40	98.14	12	1.00	2.33

Δ: Forcella in fusione di alluminio / Fork made of light metal die cast

○: Forcella in acciaio saldato / Fork made of welded steel