

L270 CIN



T-HANDLE WITH FEMALE STAINLESS STEEL THREADED INSERT

INOX

Material:

Reinforced polyamide.
Oils and greases resistant.

Surface:

Satin.

Colour:

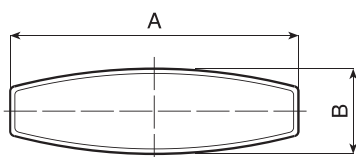
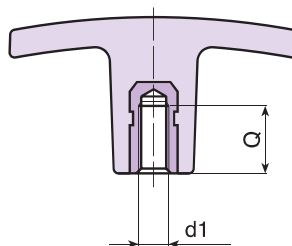
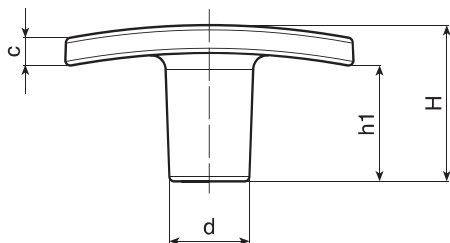
Black (RAL 9011).

Main Insert:

Stainless steel blind threaded bush (AISI 303).
(tolerance 6H).

SPECIAL REQUEST:

- It is possible to supply colours as shown in the table at pag. L-27, on request and for quantities.



| | Art. | A | B | H | h1 | c | d | d1 6H | Q | g | F1 (N) |
|---|------------------|----|----|----|----|----|------|-------|----|----|--------|
| ● | L27050.TM0501CIN | 50 | 15 | 24 | 17 | 5 | 14 | M05 | 9 | 14 | 4100 |
| ● | L27050.TM0601CIN | 50 | 15 | 24 | 17 | 5 | 14 | M06 | 9 | 14 | 4100 |
| ● | L27050.TM0801CIN | 50 | 15 | 24 | 17 | 5 | 14 | M08 | 12 | 16 | 4100 |
| ● | L27060.TM0601CIN | 60 | 18 | 33 | 24 | 6 | 16,5 | M06 | 9 | 20 | 5800 |
| ● | L27060.TM0801CIN | 60 | 18 | 33 | 24 | 6 | 16,5 | M08 | 12 | 21 | 5800 |
| ● | L27060.TM1001CIN | 60 | 18 | 33 | 24 | 6 | 16,5 | M10 | 18 | 24 | 5800 |
| ● | L27072.TM0801CIN | 72 | 19 | 34 | 20 | 10 | 18 | M08 | 19 | 32 | 6500 |
| ● | L27072.TM1001CIN | 72 | 19 | 34 | 20 | 10 | 18 | M10 | 18 | 33 | 6500 |
| ● | L27072.TM1201CIN | 72 | 19 | 34 | 20 | 10 | 18 | M12 | 15 | 34 | 6500 |

