






## CORDPLAST®

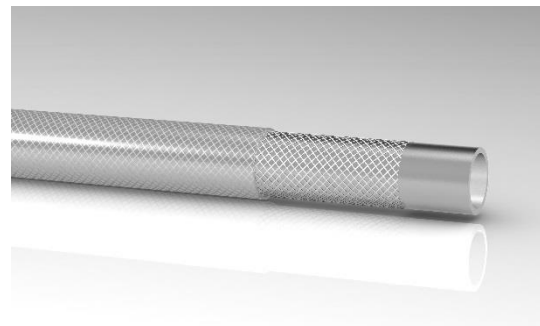
## CRISTALCORD

				
mm	mm	gr/mt	bar	bar
5	3,0	81	20	60
6	3,0	83	20	60
7	3,0	119	20	60
8	3,0	117	20	60
10	3,0	138	15	45
12	3,0	159	10	30
13	3,0	169	10	30
15	3,0	190	10	30
16	3,0	201	10	30
19	3,5	280	10	30
22	4,0	374	8	24
25	4,0	417	8	24
30	4,0	490	7	21
32	4,5	560	7	21
35	5,0	686	7	21
38	5,0	743	5	15
40	5,0	777	5	15
45	5,0	840	5	15
50	5,0	949	5	15

TEMPERATURE, TEMPERATUR, TEMPERATURA, TEMPERATURE: -5°C / +60°C  
+23°F / +140°F

NORMS, NORMEN. NORMAS, NORMES EEC DIRECTIVE: EU 10/2011, FOR  
SIMULANT TYPE A-B-C, ISO 1307

LENGHT/LANGE/LONGITUD/LONGUEUR: mt 100 up to Ø 13 - mt 50 up to Ø16  
and over



**Tube:** non-toxic transparent pvc.

**Reinforcement:** high tensile synthetic textile.

**Cover:** abrasion, ozone and weather resistant transparent pvc allowing easy inspection during service.

**Application:** for conveying fluids, air, powdered foods, salts, light chemicals.



**Seele:** toxisfrei, transparenter pvc.

**Einlagen:** hochfestes synthetisches textildgewebe.

**Decke:** abriebfester, ozon - und witterungsbeständiger, transparenter pvc.

**Anwendung:** geeignet als bewässerungsschlauch, zum durchleiten von leichten chemikalien, sowie säuren und laugen



**Sustrato:** pvc no-tóxico transparente.

**Refuerzo:** con inserciones textiles con alta resistencia.

**Cobertura:** pvc transparente resistente a la abrasión, ozono y agentes atmosféricos.

**Uso:** para sistemas de limpieza automáticos, indicadores de nivel, aire comprimido, industria alimenticia.



**Tube:** tuyau lisse transparent en pvc, non toxique.

**Reinforcement:** insertion textile haute tenacite.

**Revetement:** lisse, transparent resistant a l'abrasion et aux agents atmospheriques.

**Application:** pour la distribution de l'eau, liquides alimentaires, air comprime e a la plupart des produits chimiques

SATI GROUP S.P.A.

Via C. Bonazzi, 24 - 40013 CASTEL MAGGIORE (BO) - ITALY

Tel. +39.051.700321 - Fax +39.051.701350

E-mail: [export@satigroup.it](mailto:export@satigroup.it)

web: [www.satigroup.it](http://www.satigroup.it)