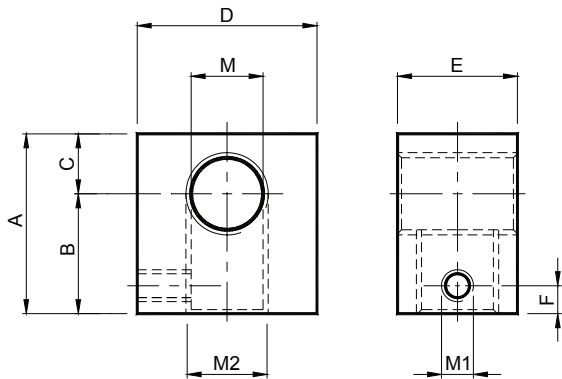


Tipo: **PIASTRINA PI** / Type: **PLATE PI**



Tipo Type	Cod. N°	A	B	C	D	E	F	M	M1	M2	Peso Weight in Kg
PI10 M8	AR070576	30	20	10	20	15	7	M8	M8	M10	0.053
PI10/20/30 M10	AR070578	30	20	10	20	15	7	M10	M8	M10	0.051
PI10/20/30 M16	AR070582	30	20	10	30	15	7	M16	M8	M10	0.073
PI40 M12	AR070584	35	22.5	12.5	30	20	7	M12	M8	M14	0.125
PI40 M16	AR070586	35	22.5	12.5	30	20	7	M16	M8	M14	0.115
PI50 M16	AR070588	45	30	15	45	30	7	M16	M8	M20	0.369
PI50 M20	AR070590	45	30	15	45	30	7	M20	M8	M20	0.354
PI60 M20	AR070592	50	35	15	50	35	10	M20	M8	M24	0.513

MATERIALI Acciaio
TRATTAMENTI Zincatura

MATERIALS Steel
TREATMENTS Electrolytic zinc plated