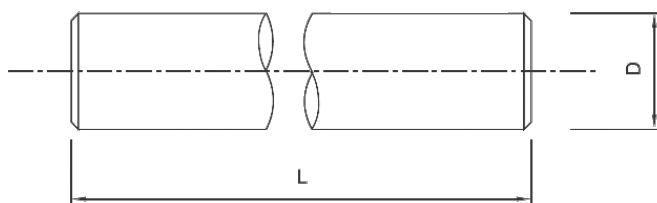
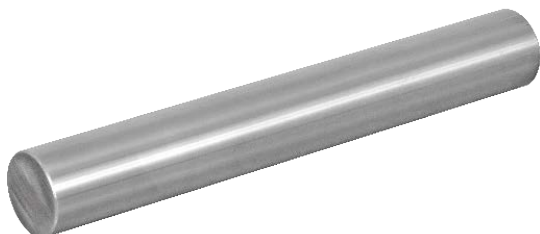




TIP WRA
 WRA TYPE



Cod Code	Tip Type	D h6	L Lungime max. Max. length (mm)	Adâncimea durității de suprafață Surface hardness depth	Concentricitatea Roundness (μm)	Paralelism Parallelism	Greutate Weight (kg/m)
84.003.002	WRA 6	6	6000	0,6-1,2	4	5	1,23
84.003.003	WRA 8	8		0,6-1,2	4	6	0,4
84.003.004	WRA 10	10		0,6-1,2	4	6	0,62
84.003.005	WRA 12	12		0,6-1,3	5	8	0,89
84.003.006	WRA 14	14		0,6-1,3	5	8	1,21
84.003.023	WRA 15	15		0,6-1,3	5	8	1,39
84.003.007	WRA 16	16		0,6-1,3	5	8	1,58
84.003.009	WRA 20	20		0,9-1,8	6	9	2,47
84.003.011	WRA 25	25		0,9-1,8	6	9	3,85
84.003.013	WRA 30	30		0,9-1,8	6	9	5,55
84.003.015	WRA 40	40		1,5-2,8	7	11	9,87
84.003.016	WRA 50	50		1,5-2,8	7	11	15,4
84.003.017	WRA 60	60		2,2-3,9	8	13	22,2

Material ax: X105 CrMo17 / 1.4125
 Shaft material: X105 CrMo17 / 1.4125

Duritatea suprafeței tratate: 53-55 HRC
 Hardened surface hardness: 53-55 HRC