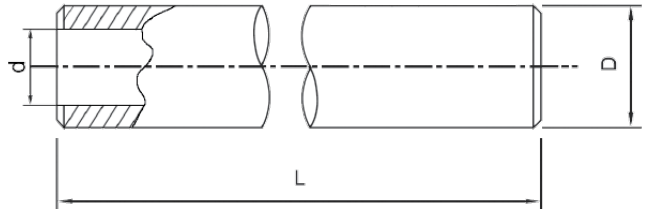
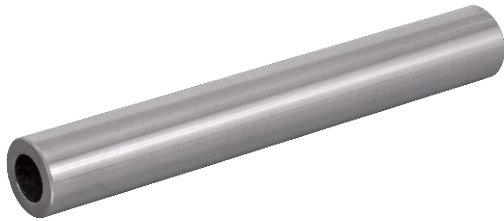


TIP WH WH TYPE



Cod Code	Tip Type	D h6	d ($\pm 10\%$)	L Lungime max. Max. length	Adâncimea durității de suprafață Surface hardness depth	Concentricitatea Roundness	Paralelism Parallelism	Greutate Weight (kg/m)
		(mm)			(μm)			
84.002.007	WH 16	16	~7	6000	1	8	11	1,28
84.002.009	WH 20	20	12		1,2	9	13	1,25
84.002.011	WH 25	25	14,5		1,8	9	13	2,35
84.002.013	WH 30	30	16,5		2	9	13	3,5
84.002.015	WH 40	40	26,5		2,2	11	16	4,99
84.002.016	WH 50	50	28		2,4	11	16	9,91
84.002.017	WH 60	60	36		2,8	13	13	14,2
84.002.019	WH 80	80	56		2,8	13	13	19,43

Material ax: CF53

Shaft material: CF53

Duritatea suprafeței tratate: 62-64 HRC

Hardened surface hardness: 62-64 HRC