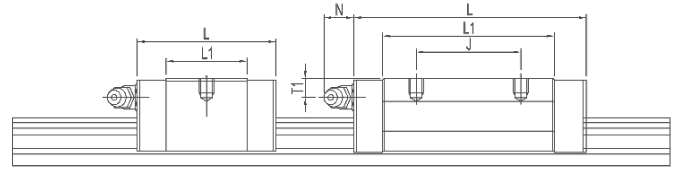
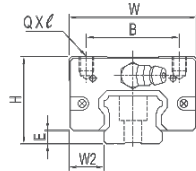
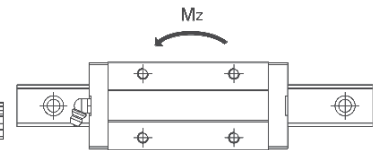
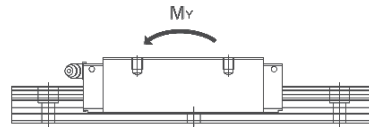
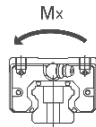


TIP TRS-V
 TRS-V TYPE



VS

VN VL VE



Cod Code			Tip Type	Dimensiuni / Sizes										Gresor Greaser			Sarcină Load		Moment static Static moment			Greutate Weight
N-Z0	H-Z1	H-Z2		H	W2	E	W	B	J	L	L1	Q x l	Oil Hole	T1	N	C	Co	Mx	My	Mz		
(mm)										(kN)		(kNm)			(kg)							
83.009.001	83.010.001	83.011.001	TRS15VS	24	9,5	3,2	34	26	-	40,3	22,9	M4x5	M4x0,7	5,5	7	9,08	14,71	0,11	0,064	0,064	0,09	
83.009.002	83.010.002	83.011.002	TRS15VN						26	56,9	39,5					12,06	22,06	0,164	0,149	0,149	0,15	
83.009.005	83.010.005	83.011.005	TRS20VS	28	11	4,6	42	32	-	49,4	27,8	M5x6	M6x1	4,5	14	13,98	21,4	0,216	0,107	0,107	0,15	
83.009.006	83.010.006	83.011.006	TRS20VN						32	68,3	46,7					18,96	33,07	0,334	0,265	0,265	0,23	
83.009.007	83.010.007	83.011.007	TRS25VS	33	12,5	5,8	48	35	-	57,2	35,2	M6x6,5	M6x1	4,5	14	19,43	30,02	0,348	0,187	0,187	0,25	
83.009.008	83.010.008	83.011.008	TRS25VN						35	81	59					25,81	45,03	0,522	0,434	0,434	0,39	
83.009.009	83.010.009	83.011.009	TRS30VS	42	16	7	60	40	-	67,4	40,4	M8x8	M6x1	8	14	26,97	39,62	0,554	0,27	0,27	0,48	
83.009.010	83.010.010	83.011.010	TRS30VN						40	96,3	69,3					38,07	64,83	0,907	0,75	0,75	0,77	
83.009.014	83.010.014	83.011.014	TRS35VN	48	18	7,5	70	50	50	109	79	M8x8	M6x1	8	14	50,9	83,46	1,427	1,061	1,061	1,15	
83.009.016	83.010.016	83.011.016	TRS35VE						72	153	123					66,67	122,74	2,099	2,34	2,34	1,54	
83.009.017	83.010.017	83.011.017	TRS45VN	60	20,5	8,9	86	60	60	124,5	90,5	M10x15	PT1/8	10,5	12,5	67,58	108,87	2,488	1,58	1,58	1,98	

⚠ Explicația codului de comandă a se vedea la pagina 132 / Explanation of order code see on page 132

N-Z0: precizie standard fără preîncărcare
H-Z1: precizie înaltă cu preîncărcare ușoară
H-Z2: precizie înaltă cu preîncărcare medie

standard accuracy without preload
 high accuracy with light preload
 high accuracy with medium preload