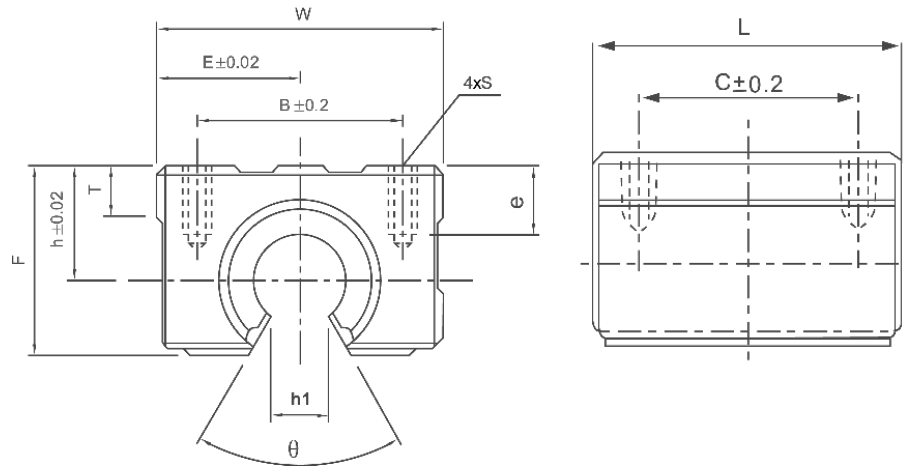


TIP SME SME TYPE



| Cod Code | Tip Type | h | E | W | L | F | T | h1 | θ | B | C | Sxe | Rulment Bearing | Sarcină Load | | Greutate Weight |
|------------|----------|----|------|-----|-----|----|----|------|----|----|----|--------|-----------------|--------------|------|-----------------|
| | | | | | | | | | | | | | | C | C0 | |
| (mm) | | | | | | | | | | | | | | (N) | (N) | (g) |
| 84.040.007 | SME16UU | 20 | 22,5 | 45 | 45 | 33 | 9 | 10 | 80 | 32 | 30 | M5x12 | LM16UU-OP | 774 | 1180 | 150 |
| 84.040.009 | SME20UU | 23 | 24 | 48 | 50 | 39 | 11 | 10 | 60 | 35 | 35 | M6x12 | LM20UU-OP | 882 | 1370 | 200 |
| 84.040.011 | SME25UU | 27 | 30 | 60 | 65 | 47 | 14 | 11,5 | 50 | 40 | 40 | M6x12 | LM25UU-OP | 980 | 1570 | 450 |
| 84.040.013 | SME30UU | 33 | 35 | 70 | 70 | 56 | 15 | 14 | 50 | 50 | 50 | M8x18 | LM30UU-OP | 1570 | 2740 | 630 |
| 84.040.014 | SME35UU | 37 | 40 | 80 | 80 | 63 | 18 | 16 | 50 | 55 | 55 | M8x18 | LM35UU-OP | 1670 | 3140 | 925 |
| 84.040.015 | SME40UU | 42 | 45 | 90 | 90 | 72 | 20 | 19 | 50 | 65 | 65 | M10x20 | LM40UU-OP | 2160 | 4020 | 1330 |
| 84.040.016 | SME50UU | 53 | 60 | 120 | 110 | 92 | 25 | 23 | 50 | 94 | 80 | M10x20 | LM50UU-OP | 3820 | 7940 | 3000 |

În carcasa de aluminiu este rulment LM-OP.
In the aluminium housing is LM-OP bushing.