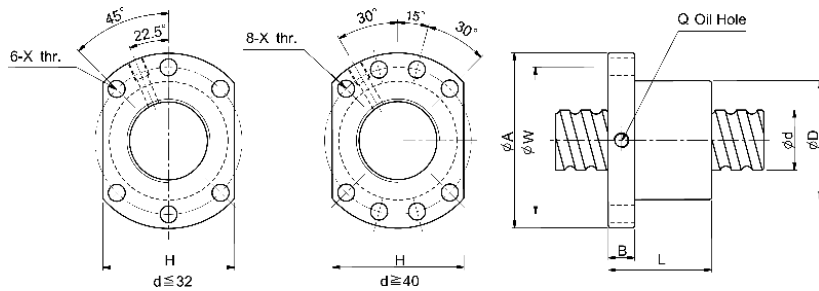


TIP SFU / SFNU SFU / SFNU TYPE



Cod Code		Tip Type	d	l	Da	D	A	B	L	W	X	H	Q	n	Ca	Coa	K
Dreapta Right	Stanga Left		(mm)												(N)		(N/μm)
81.002.008	-	SFU01204-4	12	4	2.5	24	40	10	40	32	4.5	30	-	1x4	9020	18840	260
81.002.014	-	SFU01604-4	16	4	2.381	28	48	10	40	38	5.5	40	M6	1x4	9730	24060	320
81.002.015	81.074.015	SFU01605-4 *		5	3.175	28	48	10	50	38	5.5	40	M6	1x4	13800	30520	320
81.077.015	-	SFNU01605-4		5	3.175	28	48	10	45	38	5.5	40	M6	1x4	13800	30520	320
81.002.016	81.074.016	SFU01610-3 *		10	3.175	28	48	10	57	38	5.5	40	M6	1x3	11030	24010	260
81.077.016	-	SFNU01610-3		10	3.175	28	48	10	57	38	5.5	40	M6	1x3	11030	24010	260
81.002.019	-	SFU02004-4		20	4	2.381	36	58	10	42	47	6.6	44	M6	1x4	10660	29870
81.002.020	81.074.020	SFU02005-4 *	5		3.175	36	58	10	51	47	6.6	44	M6	1x4	15510	38750	390
81.077.020	-	SFNU02005-4	5		3.175	36	58	10	51	47	6.6	44	M6	1x4	15510	38750	390
81.002.025	-	SFU02504-4	4		2.381	40	62	10	42	51	6.6	48	M6	1x4	11800	37950	430
81.002.026	81.074.026	SFU02505-4 *	5		3.175	40	62	10	51	51	6.6	48	M6	1x4	17240	49040	450
81.077.026	-	SFNU02505-4	5		3.175	40	62	10	51	51	6.6	48	M6	1x4	17240	49040	450
81.002.027	-	SFU02506-4 #	25	6	3.969	40	62	10	54	51	6.6	48	M6	1x4	23180	60570	470
81.002.028	-	SFU02508-4 #		8	4.762	40	62	10	63	51	6.6	48	M6	1x4	29630	73130	490
81.002.029	81.074.029	SFU02510-4 *		10	4.762	40	62	12	80	51	6.6	48	M6	1x4	29540	72950	500
81.077.029	-	SFNU02510-4		10	4.762	40	62	12	80	51	6.6	48	M6	1x4	29540	72950	500
81.002.031	-	SFU03204-4	32	4	2.381	50	80	12	44	65	9	62	M6	1x4	12960	48380	510
81.002.032	81.074.032	SFU03205-4 *		5	3.175	50	80	12	52	65	9	62	M6	1x4	19220	63430	540
81.077.032	-	SFNU03205-4		5	3.175	50	80	12	52	65	9	62	M6	1x4	19220	63430	540
81.002.033	-	SFU03206-4 #		6	3.969	50	80	12	57	65	9	62	M6	1x4	26320	79790	570
81.002.034	-	SFU03208-4 #		8	4.762	50	80	12	65	65	9	62	M6	1x4	33870	96220	600
81.002.035	81.074.035	SFU03210-4 *		10	6.35	50	80	12	90	65	9	62	M6	1x4	48050	122080	610
84.077.035	-	SFNU03210-4	10	6.35	50	80	12	85	65	9	62	M6	1x4	48050	122080	610	
81.002.038	81.074.038	SFU04005-4	40	5	3.175	63	93	14	55	78	9	70	M8	1x4	21100	79880	630
81.002.039	-	SFU04006-4 #		6	3.969	63	93	14	60	78	9	70	M6	1x4	28730	99130	660
81.002.040	-	SFU04008-4 #		8	4.762	63	93	14	67	78	9	70	M8	1x4	37120	119470	700
81.002.041	81.074.041	SFU04010-4 *		10	6.35	63	93	14	88	78	9	70	M8	1x4	53990	155000	730
81.077.041	-	SFNU04010-4		10	6.35	63	93	14	88	78	9	70	M8	1x4	53990	155000	730
81.002.045	81.074.045	SFU05010-4 *		50	10	6.35	75	110	16	93	93	11	85	M8	1x4	60040	196140
81.077.045	-	SFNU05010-4	10		6.35	75	110	16	88	93	11	85	M8	1x4	60040	196140	850
81.002.047	-	SFU05020-4 #	20		7.144	75	110	16	138	93	11	85	M8	1x4	71420	225880	940



Cod Code		Tip Type	d	l	Da	D	A	B	L	W	X	H	Q	n	Ca	Coa	K
Dreapta Right	Stânga Left		(mm)											(N)	(N/μm)		
81.002.049	81.074.049	SFU06310-4*	63	10	6.35	90	125	18	98	108	11	95	M8	1x4	67190	253580	990
84.077.049	-	SFNU06310-4		10	6.35	90	125	18	93	108	11	95	M8	1x4	67190	253580	990
81.002.051	-	SFU06320-4		20	9.525	95	135	20	149	115	13.5	100	M8	1x4	114440	366530	1120
81.002.052	81.074.052	SFU08010-4*	80	10	6.35	105	145	20	98	125	13.5	110	M8	1x4	73460	319530	109
84.077.052	-	SFNU08010-4		10	6.35	105	145	20	93	125	13.5	110	M8	1x4	73460	319530	109
81.002.053	-	SFU08020-4		20	9.525	125	165	25	154	145	13.5	130	M8	1x4	129110	477470	1380
81.002.054	-	SFU10020-4#	100	20	9.525	150	202	30	180	170	17.5	155	M8	1x4	143030	606980	1620

⚠ * - Piulița nu se mai află în producție. Se anticipează ca produsele să se termine în prima jumătate a anului 2017. / The signed nut types of runway models. Anticipated completion of sales in 2017 second half.
Se va utiliza doar cu șurub SCR! / It shall be used with SCR screw!
- Doar pentru șurub rectificat / Only for ground ballscrew