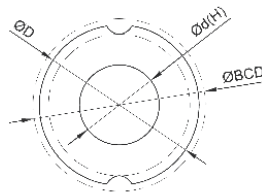
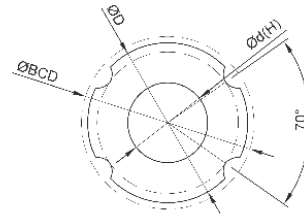


TIP SC-H (VARIANTĂ TUBULARĂ) SC-H TYPE (HOLLOW SHAFT)



D ≤ 20



D ≥ 25

Cod Codes	Tip Codes	Cod Codes	Tip Codes	D h7	d	BCD	Toleranță Tolerance	Greutate Weight
N		H		(mm)			(μm)	(kg/m)
84.081.002	SC006T2NS	84.082.002	SC006T2HS	6	2	6,75	0	0,177
84.081.003	SC008T2NS	84.082.003	SC008T2HS	8	3	8,77	-15	0,33
84.081.004	SC010T2NS	84.082.004	SC010T2HS	10	4	11,35	0	0,506
84.081.022	SC013T2NS	84.082.022	SC013T2HS	13	7	14,6		-18
84.081.007	SC016T2NS	84.082.007	SC016T2HS	16	8	17,5	0	1,25
84.081.009	SC020T2NS	84.082.009	SC020T2HS	20	10	21,8		-21
84.081.011	SC025T4NS	84.082.011	SC025T4HS	25	15	27	0	2,92
84.081.013	SC030T4NS	84.082.013	SC030T4HS	30	16	32,1		-25
84.081.015	SC040T4NS	84.082.015	SC040T4HS	40	20	43,65	0 / -30	6,75
84.081.016	SC050T4NS	84.082.016	SC050T4HS	50	26	54,2		-30

N: precizie normală standard accuracy
H: precizie înaltă high accuracy