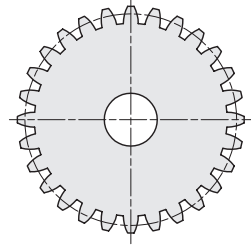
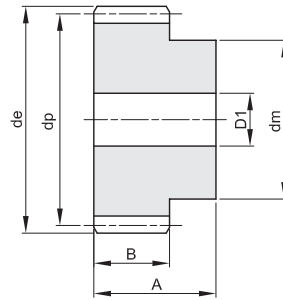
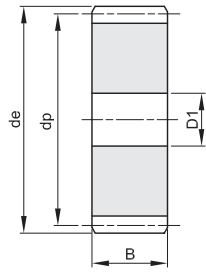




RUOTE DENTATE CILINDRICHE IN ACCIAIO INOX CYLINDRICAL GEARS IN STAINLESS STEEL

MODULO 1
ANGOLO DI PRESSIONE 20°

A	B
25	15



Materiale: INOX AISI 303

Z	codice	de	dp	dm	D1	Kg.
12	403010012	14,0	12,0	9		0,01
13	403010013	15,0	13,0	10		0,02
14	403010014	16,0	14,0	11		0,02
15	403010015	17,0	15,0	12		0,02
16	403010016	18,0	16,0	13		0,03
18	403010018	20,0	18,0	15	8	0,03
20	403010020	22,0	20,0	16	8	0,04
24	403010024	26,0	24,0	20	10	0,06
25	403010025	27,0	25,0	20	10	0,07
30	403010030	32,0	30,0	20	10	0,09
35	403010035	37,0	35,0	25	10	0,14
40	403010040	42,0	40,0	25	10	0,17

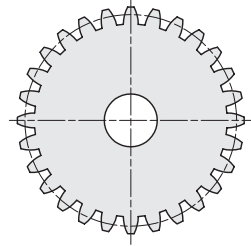
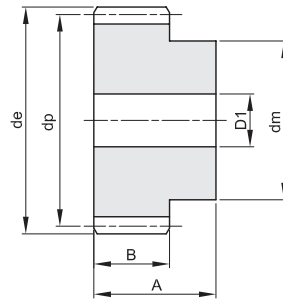
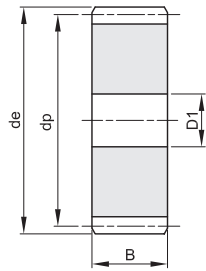
Z	codice	de	dp	dm	D1	Kg.
50	403010050	52,0	50,0	30	12	0,26
60	403010060	62,0	60,0	40	12	0,41
70	403010070	72,0	70,0	50	12	0,58
80	403010080	82,0	80,0		12	0,58
90	403010090	92,0	90,0		12	0,73
100	403010100	102,0	100,0		12	0,91
110	403010110	112,0	110,0		12	1,10
120	403010120	122,0	120,0		12	1,32



RUOTE DENTATE CILINDRICHE IN ACCIAIO INOX CYLINDRICAL GEARS IN STAINLESS STEEL

MODULO 1,5
ANGOLO DI PRESSIONE 20°

A	B
30	17



Materiale: INOX AISI 303

Z	codice	de	dp	dm	D1	Kg.
12	403015012	21,0	18,0	14	8	0,04
13	403015013	22,5	19,5	15	8	0,05
14	403015014	24,0	21,0	17	8	0,06
15	403015015	25,5	22,5	18	8	0,07
18	403015018	30,0	27,0	20	8	0,10
20	403015020	33,0	30,0	25	8	0,13
24	403015024	39,0	36,0	25	10	0,17
25	403015025	40,5	37,5	25	10	0,18
30	403015030	48,0	45,0	30	12	0,26
40	403015040	63,0	60,0	40	12	0,48
50	403015050	78,0	75,0	50	14	0,76
60	403015060	93,0	90,0	60	16	1,09

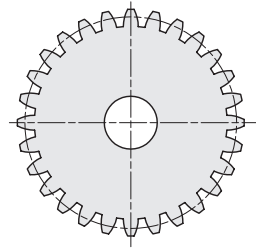
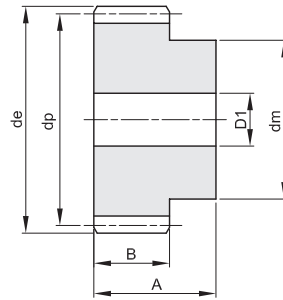
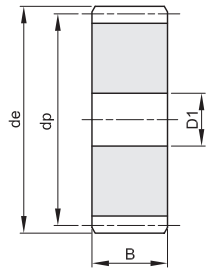
Z	codice	de	dp	dm	D1	Kg.
70	403015070	108,0	105,0	70	16	1,50
80	403015080	123,0	120,0		16	1,48
120	403015120	183,0	180,0		16	3,36



RUOTE DENTATE CILINDRICHE IN ACCIAIO INOX CYLINDRICAL GEARS IN STAINLESS STEEL

MODULO 2
ANGOLO DI PRESSIONE 20°

A	B
35	20



Materiale: INOX AISI 303

Z	codice	de	dp	dm	D1	Kg.
12	403020012	28,0	24,0	18	10	0,08
13	403020013	30,0	26,0	20	10	0,10
14	403020014	32,0	28,0	22	10	0,12
15	403020015	34,0	30,0	24	10	0,14
20	403020020	44,0	40,0	30	10	0,26
24	403020024	52,0	48,0	35	12	0,36
25	403020025	54,0	50,0	35	12	0,39
30	403020030	64,0	60,0	40	14	0,55
40	403020040	84,0	80,0	50	14	0,97
50	403020050	104,0	100,0	70	16	1,62
60	403020060	124,0	120,0	70	16	2,16
80	403020080	164,0	160,0		20	3,09

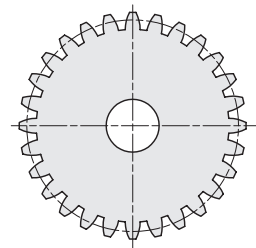
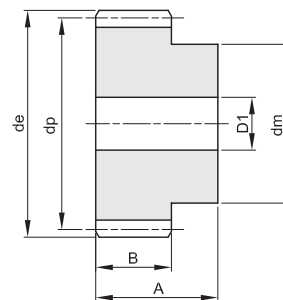
Z	codice	de	dp	dm	D1	Kg.



RUOTE DENTATE CILINDRICHE IN ACCIAIO INOX CYLINDRICAL GEARS IN STAINLESS STEEL

MODULO 2,5
ANGOLO DI PRESSIONE 20°

A	B
45	25



Materiale: INOX AISI 303

Z	codice	de	dp	dm	D1	Kg.
12	403025012	35,0	30,0	22	10	0,17
13	403025013	37,5	32,5	25	10	0,21
14	403025014	40,0	35,0	28	10	0,25
15	403025015	42,5	37,5	30	10	0,30
20	403025020	55,0	50,0	40	12	0,54
24	403025024	65,0	60,0	45	14	0,74
25	403025025	67,5	62,5	50	14	0,85
30	403025030	80,0	75,0	55	14	1,18
40	403025040	105,0	100,0	70	16	2,06
50	403025050	130,0	125,0	80	20	3,07
60	403025060	155,0	150,0	100	20	4,57

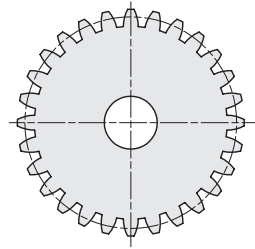
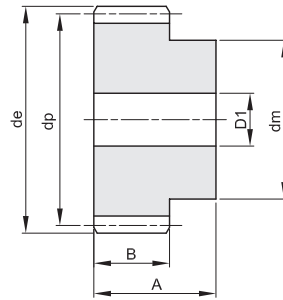
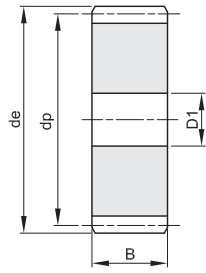
Z	codice	de	dp	dm	D1	Kg.



RUOTE DENTATE CILINDRICHE IN ACCIAIO INOX CYLINDRICAL GEARS IN STAINLESS STEEL

MODULO 3
ANGOLO DI PRESSIONE 20°

A	B
50	30



Materiale: INOX AISI 303

Z	codice	de	dp	dm	D1	Kg.
12	403030012	42,0	36,0	27	12	0,28
15	403030015	51,0	45,0	35	12	0,47
20	403030020	66,0	60,0	45	14	0,84
24	403030024	78,0	72,0	50	16	1,18
25	403030025	81,0	75,0	60	16	1,39
30	403030030	96,0	90,0	60	16	1,85
40	403030040	126,0	120,0	80	20	3,31
50	403030050	156,0	150,0		20	4,06
60	403030060	186,0	180,0		20	5,89

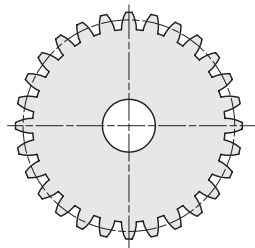
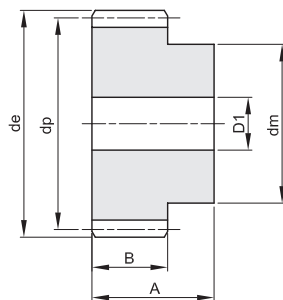
Z	codice	de	dp	dm	D1	Kg.



RUOTE DENTATE CILINDRICHE IN ACCIAIO INOX CYLINDRICAL GEARS IN STAINLESS STEEL

MODULO 4
ANGOLO DI PRESSIONE 20°

A	B
60	40



Materiale: INOX AISI 303

Z	codice	de	dp	dm	D1	Kg.
12	403040012	56,0	48,0	35	14	0,63
13	403040013	60,0	52,0	40	14	0,78
14	403040014	64,0	56,0	45	14	0,93
15	403040015	68,0	60,0	45	14	1,05
20	403040020	88,0	80,0	60	16	1,90
24	403040024	104,0	96,0	75	20	2,79
25	403040025	108,0	100,0	75	20	2,98
30	403040030	128,0	120,0	75	20	4,06

Z	codice	de	dp	dm	D1	Kg.