

TURNUED THREADED STUO WITH BALL JOINT R15 WITH HEXAGON 16 MM.

PEP.VZE16-R15



Material: Automatic steel.

Surface: Blue zinc plated.

Thread: Thread with 6g tolerance 6g.

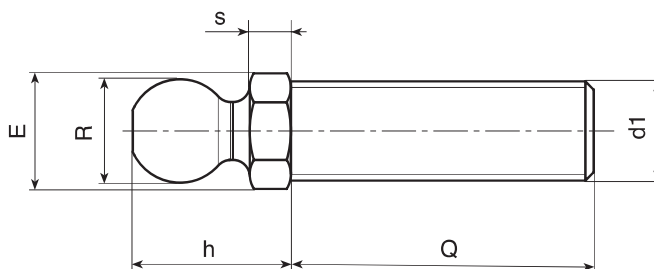
SPECIAL REQUESTS:

- It is possible to supply the inserts with different lengths or different design, on request and for quantities.

FOOT BASE COMPATIBILITY:

These studs are compatible with the following foot bases:

- PIE.060S15 • PIE.080S15 • PIE.105S15 • PIE.130S15



Art.	E	s	h	R	d1 6g	Q	g
PEP.VZE16X6M12X..	16	6	23	15	M12	50-70-90-110	63-76-91-107
PEP.VZE16X6M14X..	16	6	23	15	M14	50-70-90-110-130-150	75-95-116-133-150-167
PEP.VZE16X6M16X..	16	6	23	15	M16	50-70-90-110-130-150-170-190	91-117-143-168-194-219-247-270

Enter the stud length choice in the two .. of the article code. Lengths by request with 100 pieces minimum quantity.

STAINLESS STEEL TURNUED THREADED STUO WITH BALL JOINT R15 WITH HEXAGON 16 MM.

PEP.INE16-R15



Material: Stainless Steel AISI 303.

Surface: Natural.

Thread: Thread with 6g tolerance.

SPECIAL REQUESTS:

- It is possible to supply the inserts with different lengths or different design, on request and for quantities.

FOOT BASE COMPATIBILITY:

These studs are compatible with the following foot bases:

- PIE.060S15 • PIE.080S15 • PIE.105S15 • PIE.130S15



Art.	E	s	h	R	d1 6g	Q	g
PEP.INE16X6M12X..	16	6	23	15	M12	50-70-90	63-76-91
PEP.INE16X6M14X..	16	6	23	15	M14	50-70-90-110-130	75-95-116-133-150
PEP.INE16X6M16X..	16	6	23	15	M16	50-70-90-110-130-150-170	91-117-143-168-194-219-247

Enter the stud length choice in the two .. of the article code. Lengths by request with 100 pieces minimum quantity.

Presumable presence in the stock in %

() 90% () 40% () 5% ()

BOTECO® - © All right reserved - www.boteco.it
Any unauthorized reproduction is strictly forbidden



BOTECO

P - MOUNTING FEET