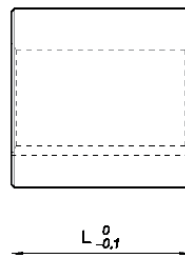
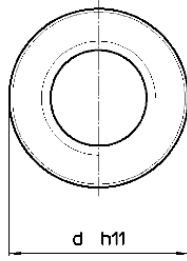


PIULIȚĂ CILINDRICĂ DIN OȚEL CYLINDRICAL STEEL NUT



Material	oțel
Material	steel
Sudabil	numai cu sudură MIG-MAG
Weldable	only MIG-MAG welding
Tip	MZP (79.010)
Type	MLF (79.021)

Cod Code		Ø x Pas Ø x Lead	Începuturi Thread starts	d mm	L mm	Greutate Weight (kg)	At* mm ²
dreapta right	stânga left						
79.010.009	79.010.007	Tr 10x2	1	22	15	0,035	150
79.010.003	79.010.001	Tr 10x3	1	22	15	0.037	240
79.010.014	79.010.011	Tr 12x3	1	26	18	0.061	296
79.010.017	---	Tr 12x6 (P3)	2	26	18	0.061	296
79.010.032	79.010.029	Tr 14x3	1	30	21	0,090	395
79.010.023	79.010.020	Tr 14x4	1	30	21	0.095	395
79.010.038	79.010.035	Tr 16x4	1	36	24	0.158	528
79.021.041	---	Tr 16x8 (P4)	2	36	36	0,238	792
79.010.047	79.010.044	Tr 18x4	1	40	27	0.218	553
79.010.056	79.010.053	Tr 20x4	1	45	30	0.308	847
79.021.059	---	Tr 20x8 (P4)	2	40	40	0,306	1130
79.010.068	79.010.065	Tr 22x5	1	45	33	0.324	1010
79.010.077	79.010.074	Tr 24x5	1	50	36	0.440	1215
79.021.086	79.021.083	Tr 25x5	1	45	45	0,400	1590
79.021.089	---	Tr 25x10 (P5)	2	45	45	0,400	1590
79.010.101	79.010.098	Tr 26x5	1	50	39	0.454	1440
79.010.110	79.010.107	Tr 28x5	1	60	42	0.747	1680
79.021.113	---	Tr 28x10 (P5)	2	45	45	0,360	1800
79.010.135	79.010.132	Tr 30x6	1	60	45	0.773	1908
79.021.138	---	Tr 30x12 (P6)	2	50	50	0,520	2120
79.010.147	79.010.144	Tr 32x6	1	60	48	0.790	2186
79.021.174	79.021.171	Tr 35x6	1	55	55	0,650	2764
79.010.183	79.010.180	Tr 36x6	1	75	54	1.476	2800
79.010.210	79.010.207	Tr 40x7	1	80	60	1.826	3440
79.021.213	---	Tr 40x14 (P7)	2	60	60	0,790	3440
79.010.231	79.010.228	Tr 44x7	1	80	66	1.878	4200
79.021.237	79.021.234	Tr 45x8	1	65	65	0,950	4186
79.010.261	79.010.258	Tr 50x8	1	90	75	2.680	5418
79.021.267	---	Tr 55x9	1	80	80	1,780	6345
79.010.273	79.010.270	Tr 60x9	1	100	90	3,698	7847
79.010.279	79.010.276	Tr 70x10	1	110	105	4,884	10200
79.010.285	79.010.282	Tr 80x10	1	120	120	6,210	14137

* Suprafață de contact între șurub și piuliță Contact surface between the screw and nut