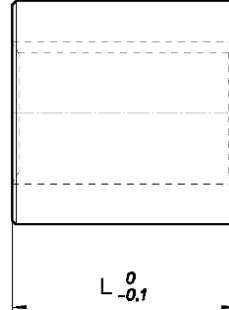
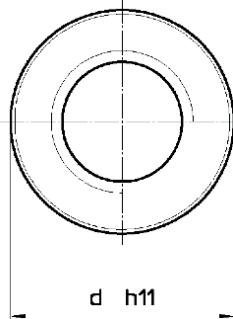


## PIULIȚĂ CILINDRICĂ DIN MATERIAL PLASTIC CYLINDRICAL PLASTIC NUT



<b>Material</b>	plastic
<b>Material</b>	plastic
<b>Sudabil</b>	---
<b>Weldable</b>	---
<b>Tip</b>	MPH (79.016)
<b>Type</b>	

Cod Code		Ø x Pas Ø x Lead	Începuturi Thread starts	d mm	L mm	Greutate Weight (kg)	At* mm <sup>2</sup>
dreapta right	stânga left						
79.016.014	79.016.011	Tr 12x3	1	26	24	0.012	396
79.016.038	79.016.035	Tr 16x4	1	36	32	0.030	704
79.016.056	79.016.053	Tr 20x4	1	45	40	0.060	1130
79.016.086	79.016.083	Tr 25x5	1	50	48	0.083	1696
79.016.110	79.016.107	Tr 28x5	1	60	60	0.154	2400
79.016.113	---	Tr 28x10 (P5)	2	60	60	0.154	2400
79.016.135	79.016.132	Tr 30x6	1	60	60	0.150	2544
79.016.174	79.016.171	Tr 35x6	1	75	72	0.290	3618
79.016.210	79.016.207	Tr 40x7	1	80	80	0.355	4587
79.016.261	79.016.258	Tr 50x8	1	90	10	0.523	7225

\* Suprafață de contact între șurub și piuliță      Contact surface between the screw and nut