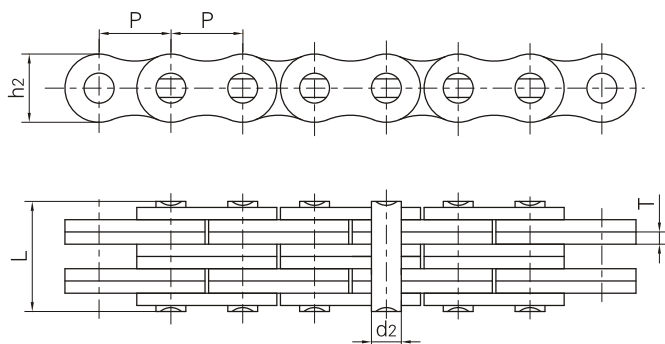
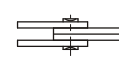


板式鏈
Leaf chains



鏈板組合
Plate lacing



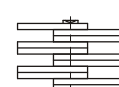
2x2



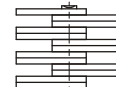
3x4



4x4



6x6



8x8

ANSI 鏈號 ANSI Chain No.	節距 Pitch	鏈板組合 Plate lacing	鏈板高度 Plate depth	鏈板厚度 Plate thickness	銷軸直徑 Pin diameter	銷軸長度 Pin length	極限拉伸載荷 Ultimate tensile strength	平均拉伸載荷 Average tensile strength	每米長重 Weight per meter
	P		h ₂ max	T max	d ₂ max	L max	Q min	Q ₀	q
	mm		mm	mm	mm	mm	kN/LB	kN	kg/m
AL322	9.525	2 X 2	7.7	1.3	3.58	6.8	9.0/2045	10.2	0.23
AL344		4 X 4				11.6	18.0/4090	20.0	0.46
AL422	12.7	2 X 2	10.4	1.5	3.96	8.3	14.1/3205	16.9	0.39
AL444		4 X 4				14.4	28.2/6409	35.2	0.74
AL466		6 X 6				20.5	42.3/9614	52.7	1.13
AL522	15.875	2 X 2	12.8	2.03	5.08	11.05	22.0/5000	27.5	0.64
AL534		3 X 4				17.0	33.0/7500	46.0	1.10
AL544		4 X 4				19.4	44.0/10000	55.0	1.25
AL566		6 X 6				27.5	66.0/15000	82.5	1.79
AL622	19.05	2 X 2	15.6	2.42	5.94	13.0	37.0/8409	44.4	0.86
AL644		4 X 4				22.7	63.7/14450	78.8	1.76
AL666		6 X 6				32.2	100.1/22750	118.6	2.60
AL688		8 X 8				42.2	133.4/30317	156.6	3.49
AL822	25.4	2 X 2	20.5	3.25	7.92	16.0	56.7/12886	68.6	1.54
AL844		4 X 4				29.4	113.4/25773	135.6	3.00
AL866		6 X 6				44.2	170.0/38636	202.3	4.46
AL1022	31.75	2 X 2	25.6	4.0	9.53	19.6	88.5/20114	107.1	2.37
AL1044		4 X 4				36.4	177.0/40227	203.6	4.68
AL1066		6 X 6				52.3	265.0/60227	315.3	7.20
AL1088		8 X 8				68.5	354.0/80454	421.2	9.94
AL1222	38.1	2 X 2	30.5	4.8	11.10	24.3	127.0/28864	151.1	3.65
AL1244		4 X 4				43.8	254.0/57727	299.7	7.05
AL1266		6 X 6				63.2	381.0/86591	426.3	10.50
AL1288		8 X 8				82.6	508.0/11545	568.4	14.03
AL1444	44.45	4 X 4	36.4	5.6	12.64	51.3	372.7/84705	413.6	10.34
AL1466		6 X 6				74.56	559.0/127045	620.4	15.16
AL1644	50.8	4 X 4	41.6	6.4	14.21	58.0	471.0/107045	522.8	12.98
AL1666		6 X 6				83.8	706.0/160454	783.6	19.76
AL1688		8 X 8				109.5	942.0/214090	1045.5	25.47