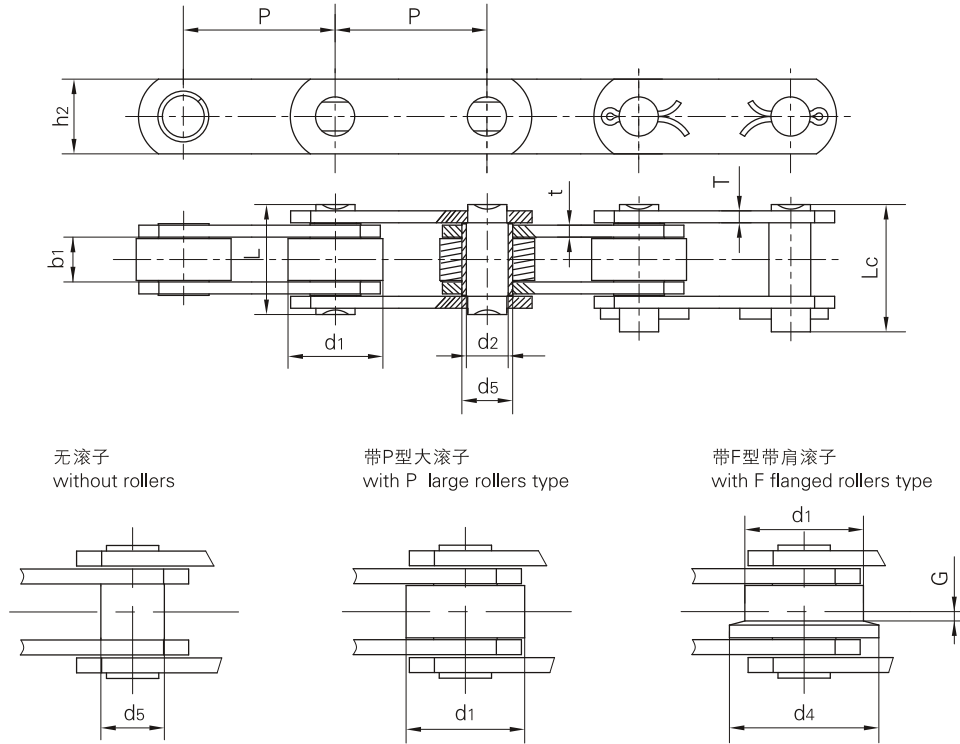


Z系列輸送鏈  
Conveyor chains (Z series)



Vision Chain No.	节距 Pitch							滚子尺寸 Roller dimension			套筒直径 Bush diameter
	P							d1 max	d4 max	G	d5 max
	mm	mm	mm	mm	mm	mm	mm	mm	mm	mm	
Z40	50.8	63.5	76.2	88.9	101.6	127.0	152.4	31.75	40.0	2.5	17.0
Z100	76.2	88.9	101.6	127.0	152.4	177.8	203.2	47.50	60.0	3.5	23.0
Z160	101.6	127.0	152.4	177.8	203.2	228.6	254.0	66.70	82.0	3.5	33.0
Z300	152.4	177.8	203.2	254.0	304.8			88.90	114.0	8.5	38.0

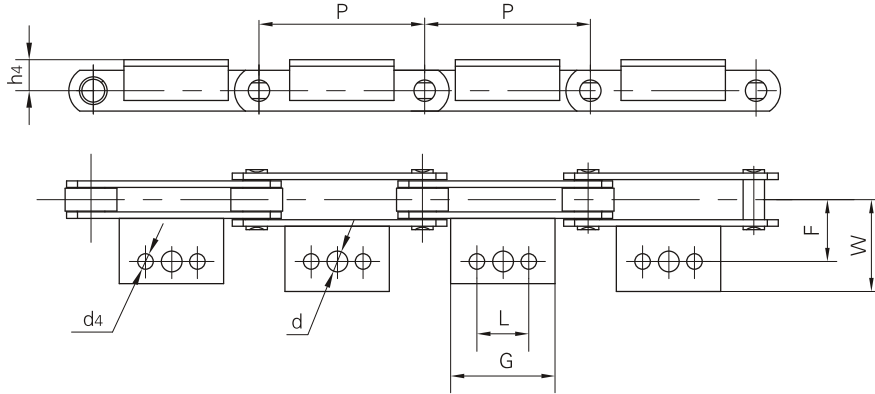
Vision Chain No.	内节内宽 Width between inner plates	销轴直径 Pin diameter	链板高度 Plate depth	销轴长度 Pin length		链板厚度 Plate thickness	破断载荷 Breaking load	
	b1 min	d2 max	h2 min	L max	Lc max	t/T max	Q min	*Q min
	mm	mm	mm	mm	mm	mm	kN/LB	kN/LB
Z40	15.0	14.0	25.0	37.0	40.5	4.0	40.0/9091	50.0/11362
Z100	19.0	19.0	40.0	45.0	50.5	5.0/4.0	100.0/22725	130.0/29540
Z160	26.0	26.9	50.0	58.0	63.5	7.0/5.0	156.0/35451	200.0/45454
Z300	38.0	32.0	60.0	84.0	94.0	10.0/8.0	300.0/68175	380.0/86362

\*Q表示链板要热处理

\*Q Higher breaking load with hardened plates

Z系列带附板输送链

Conveyor chain with attachments (Z series)



Vision Chain No.		P	L	G	d	d <sub>4</sub>	F	W	h <sub>4</sub>
		mm	mm	mm	mm	mm	mm	mm	mm
Z40	△	50.8	-	45.0	10.7	9.3	38.1	64.5	19.0
	△ ☆	63.5	22.2	43.0				56.0	
	△ ☆	76.2		56.0					
	▲	88.9	31.8	50.0				56.0	
	▲	101.6		64.0				55.0	
	▲	127.0		84.0				56.0	
	▲	152.4	57.2	84.0				56.0	
Z100	△	76.2	-	30.0	14.0	10.5	44.5	65.0	32.0
	△	88.9	31.8	64.0				84.0	
	▲	101.6		114.5					
	△ ☆	127.0		57.2				84.0	
	▲	152.4	110.0						
	△ ☆	177.8	80.0	110.0				150.0	
	△ ☆	203.2		170.0					
△ ☆	254.0	135.0		170.0					
Z160	△	101.6	-	35.0	15.5	12.3	54.0	77.0	38.0
	△ ☆	127.0	31.7	56.0				130.0	
	△ ☆	152.4		84.0					
	△ ☆	177.8	57.2	84.0				150.0	
	△ ☆	203.2		100.0					
	△ ☆	228.6		150.0					
	△ ☆	254.0	135.0	170.0					
Z300	△	152.4	38.1	70.0	17.0	14.0	73.0	100.0	51.0
	△	177.8		70.0					
	△ ☆	203.2	76.2	100.0					
	△ ☆	254.0	90.0	152.4					
	△ ☆	304.8	190.0	225.0					

△表示附板带1个孔  
△ attachments with 1 hole

☆表示附板带2个孔  
☆ attachments with 2 holes

▲表示附板带3个孔  
▲ attachments with 3 holes