

# WINGNUT WITH THREADED STUD

# L751



**Material:**

Reinforced polyamide.  
Oils and greases resistant.

**Surface:**

Satin.

**Colour:**

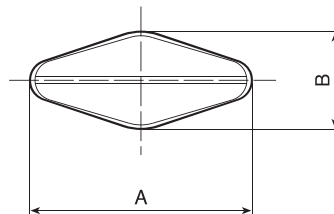
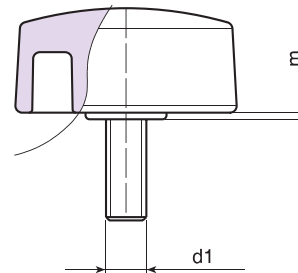
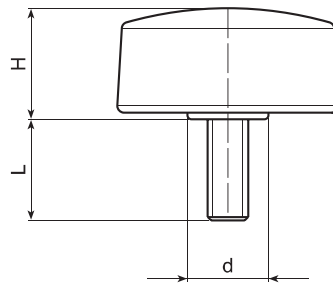
Black (RAL 9011).

**Main Insert:**

Zinc plated steel threaded stud (tolerance 6g).

**SPECIAL REQUESTS:**

- It is possible to supply inserts in different lengths or by special design, on request and for quantities.
- It is possible to supply inserts in different materials, on request and for quantities.
- It is possible to supply colours as shown in the table on page L-27, on request and for quantities.



Art.	A	B	H	m	d	LM	d1 6g	Q	g
L75132.TM05X..01	33	15	16,5	1	12	60	M05	16-25-30-40	8-9-11-15
L75132.TM06X..01	33	15	16,5	1	12	60	M06	10-16-20-25-30-40	9-11-12-12-12,5-15,5
L75132.TM08X..01	33	15	16,5	1	12	60	M08	10-16-20-25-30-40	13,5-14,5-16-17,5-19-22
L75148.TM06X..01	48	15	16	1	12,5	70	M06	10-16-20	13-15-16-17
L75148.TM08X..01	48	15	16	1	12,5	70	M08	16-20-25-30-40	18-20-21,5-23-27

Enter the stud length choice in the two .. of the article code. Lengths by request with 150 pieces minimum quantity.

LM = Maximum mouldable length.

Presumable presence in the stock in %

( ) 90% ( ● ) 40% ( ● ) 5% ( ● )

BOTECO® - © All right reserved - www.boteco.it  
Any unauthorized reproduction is strictly forbidden



**BOTECO**

**L - WINGNUTS  
AND T-HANDLES**

# L751 CIN



PA6  
+GF

UL94  
HB



## WINGNUT WITH STAINLESS STEEL THREADED STUD

**INOX**

**Material:**

Reinforced polyamide.  
Oils and greases resistant.

**Surface:**

Satin.

**Colour:**

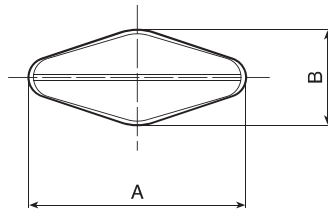
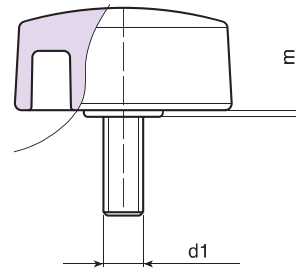
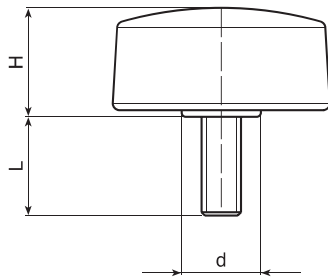
Black (RAL 9011).

**Main Insert:**

Stainless steel threaded stud (AISI 303).  
(tolerance 6g).

**SPECIAL REQUESTS:**

- It is possible to supply inserts in different lengths or by special design, on request and for quantities.
- It is possible to supply colours as shown in the table on page L-27, on request and for quantities.



Art.	A	B	H	m	d	LM	d1 6g	Q	g
L75132.TM05X..01CIN	33	15	16,5	1	12	60	M05	A.R.	-
L75132.TM06X..01CIN	33	15	16,5	1	12	60	M06	11-16-30	11-13-17
L75132.TM08X1601CIN	33	15	16,5	1	12	60	M08	16	15
L75148.TM06X..01CIN	48	15	16	1	12,5	70	M06	A.R.	-
L75148.TM08X..01CIN	48	15	16	1	12,5	70	M08	A.R.	-

Enter the stud length choice in the two .. of the article code. Lengths by request with 250 pieces minimum quantity.

LM = Maximum mouldable length.

A.R. = by request.

**L - WINGNUTS  
AND T-HANDLES**

ver. LUK.18-0916



**BOTECO**

Presumable presence in the stock in %

(☐) 90% (●) 40% (●) 5% (●)

www.boteco.it - © All right reserved - BOTECO ®

Any unauthorized reproduction is strictly forbidden