

L750 CIN



WINGNUT WITH STAINLESS STEEL FEMALE THREADED INSERT

INOX

Material:

Reinforced polyamide.
Oils and greases resistant.

Surface:

Satin.

Colour:

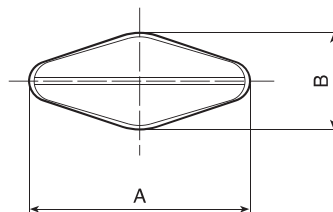
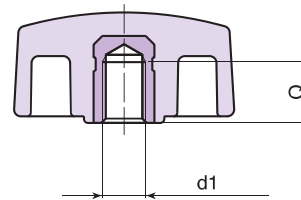
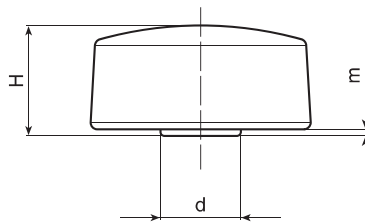
Black (RAL 9011).

Main Insert:

Stainless steel blind threaded bush (AISI 303).
(tolerance 6H).

SPECIAL REQUEST:

- It is possible to supply colours as shown in the table at pag. L-27, on request and for quantities.



	Art.	A	B	H	m	d	d1 6H	Q	g
●	L75032.TM0501CIN	33	15	16,5	1	12	M05	7	9
●	L75032.TM0601CIN	33	15	16,5	1	12	M06	7	8
●	L75032.TM0801CIN	33	15	16,5	1	12	M08	7	8
●	L75048.TM0801CIN	48	15	16	1	12,5	M08	7	8

