

T-HANDLE WITH THREADED STUD

L271



Material:

Reinforced polyamide.
Oils and greases resistant.

Surface:

Satin.

Colour:

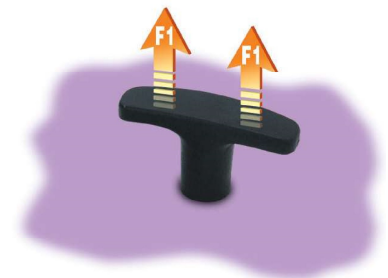
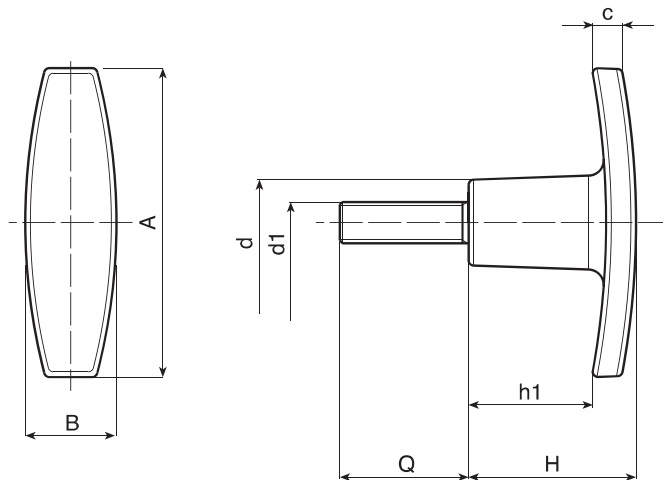
Black (RAL 9011).

Main Insert:

Zinc plated steel threaded stud (tolerance 6g).

SPECIAL REQUESTS:

- It is possible to supply inserts in different lengths or by special design, on request and for quantities.
- It is possible to supply inserts in different materials, on request and for quantities.
- It is possible to supply colours as shown in the table on page L-27, on request and for quantities.



Art.	A	B	H	h1	c	d	LM	d1 6g	Q	g	F1 (N)
L27150.TM05X..01	50	15	24	17	5	14	30	M05	20-30	13-14	4100
L27150.TM06X..01	50	15	24	17	5	14	30	M06	15-20-30-40	14,5-15-16,5-18	4100
L27160.TM05X..01	60	18	33	24	6	16,5	30	M05	15-20-30	20-21	4100
L27160.TM06X..01	60	18	33	24	6	16,5	30	M06	20-30	23-25	5800
L27160.TM08X..01	60	18	33	24	6	16,5	30	M08	20-30-40	28-31-34	5800
L27160.TM10X..01	60	18	33	24	6	16,5	30	M10	20-30-40	30-35	5800
L27172.TM06X..01	72	19	34	20	10	18	80	M06	20-30-40	30-32-34	6500
L27172.TM08X..01	72	19	34	20	10	18	80	M08	20-30-40	39-42-45	6500
L27172.TM10X..01	72	19	34	20	10	18	80	M10	30-40	56-61	6500
L27172.TM12X..01	72	19	34	20	10	18	80	M12	30-40-50	58-64-71	6500

Enter the stud length choice in the two .. of the article code. Lengths by request with 250 pieces minimum quantity.

LM = Maximum mouldable length.

Presumable presence in the stock in %

() 90% (●) 40% (●) 5% (●)

BOTECO® - © All right reserved - www.boteco.it
Any unauthorized reproduction is strictly forbidden



BOTECO

**L - WINGNUTS
AND T-HANDLES**

L271 CIN



PA6
+GF

UL94
HB



T-HANDLE WITH THREADED STAINLESS STEEL STUD

INOX

Material:

Reinforced polyamide.
Oils and greases resistant.

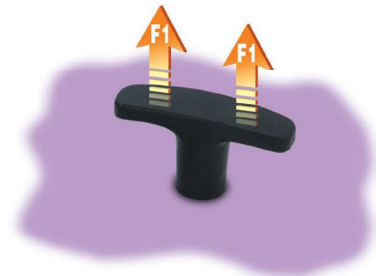
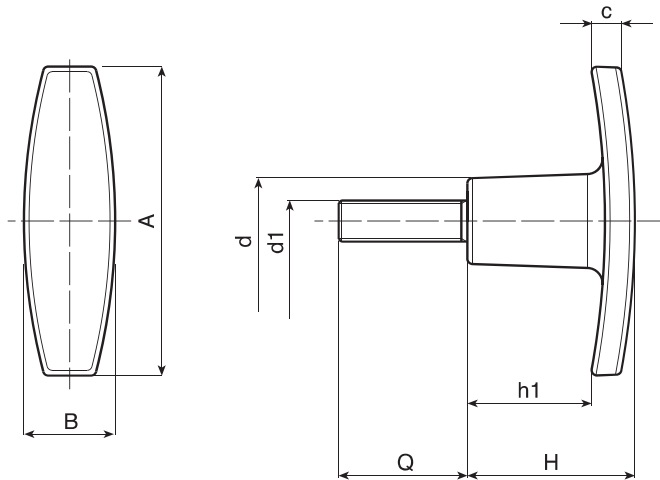
Surface:
Satin.

Colour:
Black (RAL 9011).

Main Insert:
Stainless steel threaded stud (AISI 303).
(tolerance 6g).

SPECIAL REQUESTS:

- It is possible to supply inserts in different lengths or by special design, on request and for quantities.
- It is possible to supply colours as shown in the table on page L-27, on request and for quantities.



Art.	A	B	H	h1	c	d	LM	d1 6g	Q	g	F1 (N)
● L27150.TM05X..01CIN	50	15	24	17	5	14	30	M05	A.R.	-	4100
● L27150.TM06X..01CIN	50	15	24	17	5	14	30	M06	A.R.	-	4100
● L27160.TM06X..01CIN	60	18	33	24	6	16,5	30	M06	A.R.	-	5800
● L27160.TM08X..01CIN	60	18	33	24	6	16,5	30	M08	A.R.	-	5800
● L27172.TM08X..01CIN	72	19	34	20	10	18	80	M08	A.R.	-	6500
● L27172.TM10X..01CIN	72	19	34	20	10	18	80	M10	A.R.	-	6500
● L27172.TM12X..01CIN	72	19	34	20	10	18	80	M12	A.R.	-	6500

Enter the stud length choice in the two .. of the article code. Lengths by request with 300 pieces minimum quantity.

LM = Maximum mouldable length.

A.R. = by request.

**L - WINGNUTS
AND T-HANDLES**

ver. LUK.18-0916



BOTECA

Presumable presence in the stock in %

() 90% (●) 40% (●) 5% (●)

www.boteco.it - © All right reserved - BOTECA ®

Any unauthorized reproduction is strictly forbidden