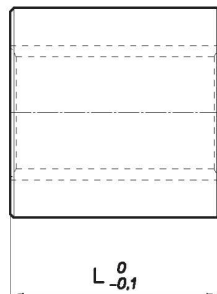
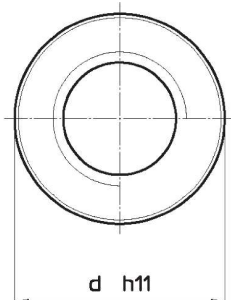


PIULIȚĂ CILINDRICĂ DIN BRONZ CILINDRICAL BRONZE NUT



Material	bronz
Material	bronze
Sudabil	---
Weldable	---
Tip	HSN (79.012)
Type	HBD (79.022)

Cod Code		Ø x pas Ø x lead	Începuturi Thread starts	d mm	L mm	Greutate Weight (kg)	At* mm ²
dreapta right	stânga left						
79.022.009	79.022.007	Tr 10x2	1	22	20	0,058	200
79.022.003	79.022.001	Tr 10x3	1	22	20	0,057	320
79.012.015	79.012.012	Tr 12x3	1	36	36	0.302	594
79.022.014	79.022.011	Tr 12x3	1	26	24	0,094	396
79.022.017	---	Tr 12x6 (P3)	2	26	24	0,094	396
79.022.032	79.022.029	TR 14x3	1	30	28	0,146	526
79.012.024	79.012.021	Tr 14x4	1	36	36	0.290	677
79.022.024	79.022.021	Tr 14x4	1	30	28	0,146	526
79.012.039	79.012.036	Tr 16x4	1	36	36	0.276	792
79.022.038	79.022.035	Tr 16x4	1	36	32	0,245	704
79.012.042	---	Tr 16x8 (P4)	2	36	36	0.276	792
79.012.048	79.012.045	Tr 18x4	1	36	36	0.259	905
79.012.057	79.012.054	Tr 20x4	1	40	40	0.354	1130
79.022.056	79.022.053	Tr 20x4	1	45	40	0,476	1130
79.012.060	---	Tr 20x8 (P4)	2	40	40	0.354	1130
79.012.069	79.012.066	Tr 22x5	1	40	40	0.33	1225
79.022.068	79.022.065	Tr 22x5	1	45	40	0,456	1225
79.022.077	79.022.074	Tr 24x5	1	50	48	0,680	1620
79.012.087	79.012.084	Tr 25x5	1	45	45	0.47	1590
79.012.090	---	Tr 25x10 (P5)	2	45	45	0.47	1590
79.022.101	79.022.098	Tr 26x5	1	50	48	0,648	1770
79.012.111	79.012.108	Tr 28x5	1	45	45	0.42	1800
79.022.111	79.022.108	Tr 28x5	1	60	60	1,237	2400
79.012.114	---	Tr 28x10 (P5)	2	45	45	0.42	1800
79.012.136	79.012.133	Tr 30x6	1	50	50	0.60	2120
79.012.139	---	Tr 30x12 (P6)	2	50	50	0.60	2120
79.022.147	79.022.144	Tr 32x6	1	60	60	1,145	2733
79.012.175	79.012.172	Tr 35x6	1	55	55	0.75	2764
79.022.183	79.022.180	Tr 36x6	1	75	72	2,189	2610
79.012.211	79.012.208	Tr 40x7	1	60	60	0.92	3440



Cod Code		Ø x pas Ø x lead	Începuturi Thread starts	d mm	L mm	Greutate Weight (kg)	At* mm ²
dreapta right	stânga left						
79.022.211	79.022.208	Tr 40x7	1	80	80	2,823	4587
79.012.214	---	Tr 40x14 (P7)	2	60	60	0.92	3440
79.012.238	79.012.235	Tr 45x8	1	65	65	1.10	4186
79.012.262	79.012.259	Tr 50x8	1	70	70	1.30	5057
79.012.268	---	Tr 55x9	1	80	80	2.07	6345
79.012.274	79.012.271	Tr 60x9	1	80	80	1.75	6975
79.022.279	79.022.276	Tr 70x10	1	110	140	7,548	10200
79.022.285	79.022.282	Tr 80x10	1	120	160	9,600	18850

* Suprafață de contact între șurub și piuliță Contact surface between the screw and nut