

# H759



## KNURLED HANDWHEEL WITH HUB AND THREADED STUD

**Material:**

Reinforced polyamide.  
Oils and greases resistant.

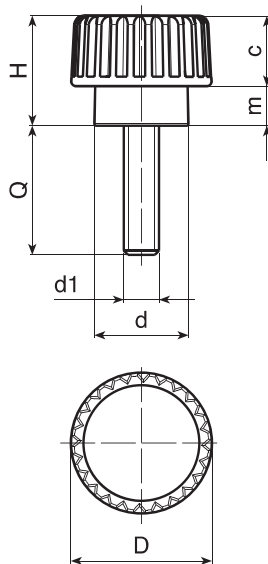
**Surface:**  
Satin.

**Colour:**  
Black (RAL 9011).

**Main Insert:**  
Zinc plated steel threaded stud (tolerance 6g).

**SPECIAL REQUESTS:**

- It is possible to supply inserts in different lengths or by special design, on request and for quantities.
- It is possible to supply inserts in different materials, on request and for quantities.
- It is possible to supply colours as shown in the table on page H-19, on request and for quantities.



art.	D	H	d	m	c	LM	d1 6g	Q	⊖ g
H75915.TM03X..01	15	12	10	4,5	7,5	70	M03	11-24	3-3,5
H75915.TM04X2001	15	12	10	4,5	7,5	70	M04	10-20-30	3,5-4-4,5
H75915.TM05X..01	15	12	10	4,5	7,5	70	M05	10-16-20-30	4-4,5-5,5-6,5
H75915.TM06X..01	15	12	10	4,5	7,5	70	M06	10-16-20	5-6-7,5

Enter the stud length choice in the two .. of the article code. Lengths by request with 250 pieces minimum quantity.

LM = Maximum mouldable length.

**H - KNURLED  
HANDWHEELS**

ver. HUK.12-0616



**BOTECO**

H - 10

Presumable presence in the stock in %

(☐) 90% (●) 40% (●) 5% (●)

www.boteco.it - © All right reserved - BOTECO ®  
Any unauthorized reproduction is strictly forbidden