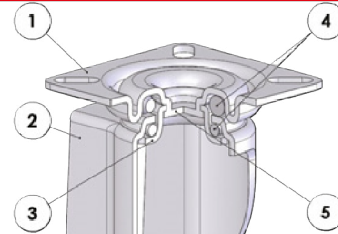




							3 km/h
mm	mm	kg	CODE	mm	mm	daN	
40	17	0.02	321102	8	21	<b>30</b>	
50	17	0.02	321104	8	22	<b>40</b>	
50	22	0.03	321105	8	28	<b>50</b>	
60	22	0.03	321106	8	28	<b>60</b>	

**Institutional brackets**



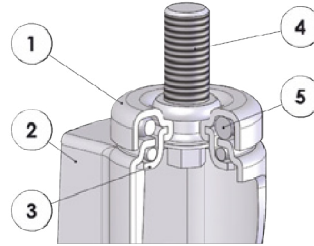
- 1) Plate: electrolytically galvanised steel plate
- 2) Fork: electrolytically galvanised steel plate
- 3) Ball race ring: electrolytically galvanised steel plate
- 4) Swivel actions: double ball ring with grease lubrication
- 5) King pin: integrated with the plate and cold-riveted

				2 pc package									3 km/h
mm	mm	kg	CODE	kg	CODE	mm	mm	mm	mm	mm	mm	daN	
40	17	0.12	324101	0.29	324001	61	42x42	30x30	5	24	<b>30</b>		
50	17	0.12	324102	0.31	324002	66	42x42	30x30	5	24	<b>40</b>		
60	22	0.22	324103	0.56	324003	82	60x60	45x45	6	21	<b>60</b>		



										3 km/h
mm	mm	kg	CODE	mm	mm	mm	mm	mm	daN	
40	17	0.10	325101	61	55x25	42	5	<b>30</b>		
50	17	0.10	325102	66	55x25	42	5	<b>40</b>		
60	22	0.20	325103	82	60x60	45x45	6	<b>60</b>		

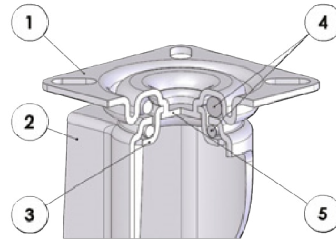
**Institutional brackets**



- 1) Plate: electrolytically galvanised steel plate
- 2) Fork: electrolytically galvanised steel plate
- 3) Ball race ring: electrolytically galvanised steel plate
- 4) Galvanised steel threaded stem
- 5) Swivel actions: double ball ring with grease lubrication

mm		kg	CODE	2 pc package		mm		mm	mm	mm	mm	daN	
40	17	0.12	326101	0.26	326001	61	35	M10	20	24		<b>30</b>	
50	17	0.14	326102	0.28	326002	66	35	M10	20	24		<b>40</b>	
60	22	0.23	326103	0.47	326003	82	41	M12	24	21		<b>60</b>	

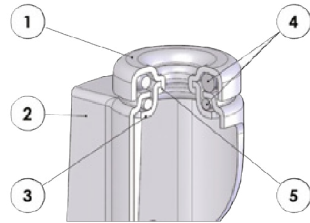
**Institutional twin brackets for high carrying capacity**



- 1) Plate: electrolytically galvanised steel plate
  - 2) Fork: electrolytically galvanised steel plate
  - 3) Ball race ring: electrolytically galvanised steel plate
  - 4) Swivel actions: double ball ring with grease lubrication
  - 5) King pin: integrated with the plate and cold-riveted
- Available with total front foot brake

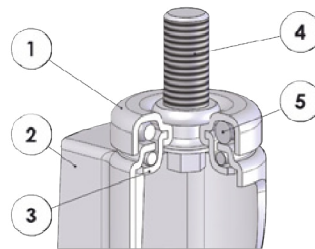
mm		kg	CODE	kg		mm	mm	mm	mm	mm	mm	daN	
50	18+18	0.28	324302	0.33	328202	71	60x60	45x45	6	25.5	83	<b>90</b>	

**Institutional twin brackets for high carrying capacity**



- 1) Plate: electrolytically galvanised steel plate
  - 2) Fork: electrolytically galvanised steel plate
  - 3) Ball race ring: electrolytically galvanised steel plate
  - 4) Swivel actions: double ball ring with grease lubrication
  - 5) King pin: integrated with the plate and cold-rieveted
- Available with total front foot brake

mm	mm	kg	CODE	kg	CODE	mm	mm	mm	mm	mm	daN
50	18+18	0.26	323202	0.31	327202	71	55	10	25.5	83	90

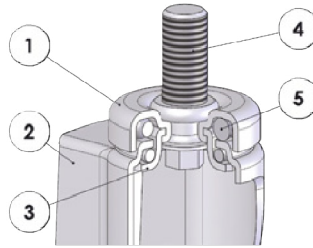
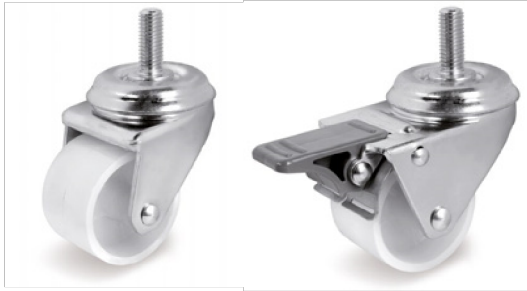


- 1) Plate: electrolytically galvanised steel plate
  - 2) Fork: electrolytically galvanised steel plate
  - 3) Ball race ring: electrolytically galvanised steel plate
  - 4) Galvanised steel threaded stem
  - 5) Swivel actions: double ball ring with grease lubrication
- Available with total front foot brake

mm	mm	kg	CODE	kg	CODE	mm	mm	mm	mm	mm	daN
50	18+18	0.29	326202	0.34	329202	71	52	M10	25	25.5	90



**Institutional brackets for high carrying capacity**



- 1) Plate: electrolytically galvanised steel plate
  - 2) Fork: electrolytically galvanised steel plate
  - 3) Ball race ring: electrolytically galvanised steel plate
  - 4) Galvanised steel threaded stem
  - 5) Swivel actions: double ball ring with grease lubrication
- Available with total front foot brake

mm	mm	kg	CODE	kg	CODE	mm	mm	mm	mm	mm	mm	daN
50	30	0.28	326302	0.33	329302	71	52	M10	25	25.5	83	<b>80</b>