

4-LOBE HANDWHEEL WITH ELONGATED HUB AND THREADED STUD

G735



Material:

Reinforced polyamide.
Oils and greases resistant.

Surface:

Satin.

Colour:

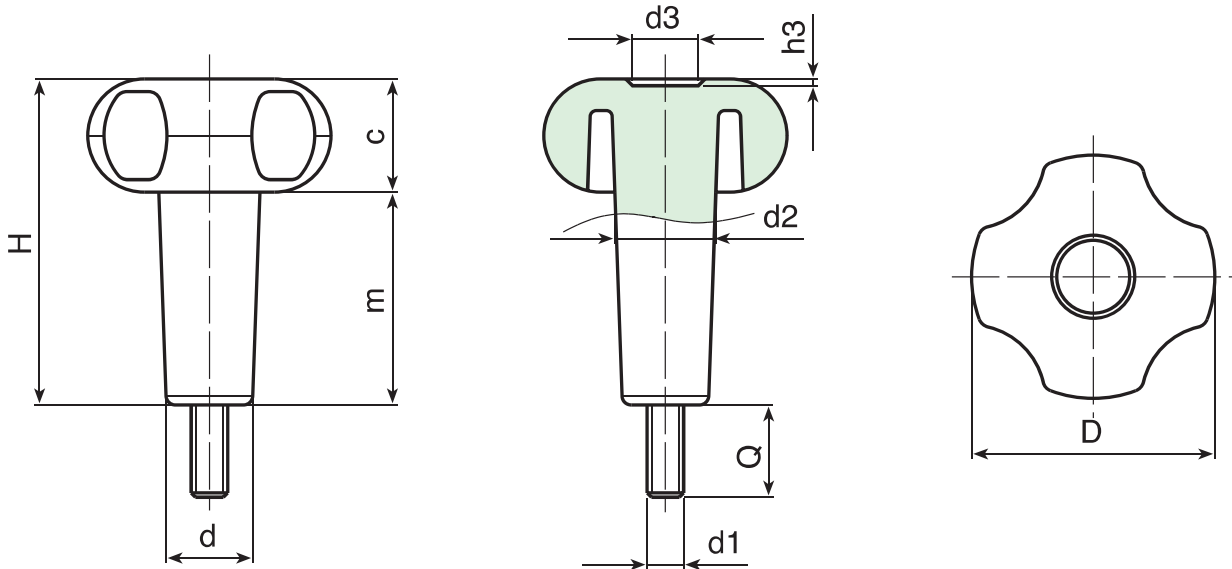
Black (RAL 9011).

Main Insert:

Zinc plated steel threaded stud (tolerance 6g).

SPECIAL REQUESTS:

- It is possible to supply inserts in different lengths or by special design, on request and for quantities.
- It is possible to supply inserts in different materials, on request and for quantities.
- It's possible to supply the handwheels with hubs by drawing, on request and for quantities.



	art.	D	H	T	d	c	d2	d3	h3	LM	d1	Q	g
●	G73530.T35M06X1501	30	47	33,5	13,5	14	15	12	2	65	M06	15	23
●	G73530.T35M08X3001	30	47	33,5	13,5	14	15	12	2	65	M08	30	36
●	G73540.T35M08X2001	41	54	35	16,5	19	17	12	3	80	M08	20	49
●	G73540.T35M10X1501	41	54	35	16,5	19	17	12	3	80	M10	15	54
●	G73550.T40M08X1501	52	61	39	17,5	22	19	14	2,5	90	M08	15	60
●	G73550.T40M10X4001	52	61	39	17,5	22	19	14	2,5	90	M10	40	82
●	G73550.T50M08X..01	52	71	49	18	22	20,5	14	2,5	80	M08	A.R.	75
●	G73550.T60M08X3001	52	80	58	18	22	21	14	2,5	70	M08	30	86
●	G73560.T60M08X..01	59	83	58	23	25	24	24	4	75	M08	A.R.	115
●	G73560.T60M10X4001	59	83	58	23	25	24	24	4	75	M10	40	138
●	G73560.T80M10X..01	59	103	78	23	25	24	24	4	55	M10	A.R.	150

LM = Maximum mouldable length. It's possible to have different lengths, by customers request. Minimum 100 pieces.

Presumable presence in the stock in %

(●) 90% (●) 40% (●) 5% (●)

BOTECO® - © All right reserved - www.boteco.it
Any unauthorized reproduction is strictly forbidden



BOTECO

**G - LOCKING
HANDWHEELS**