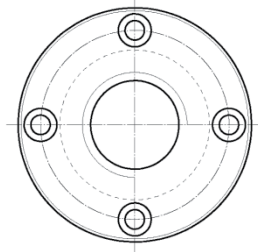
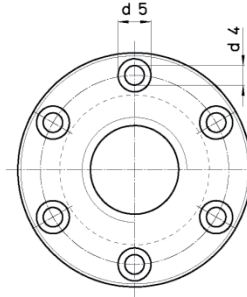
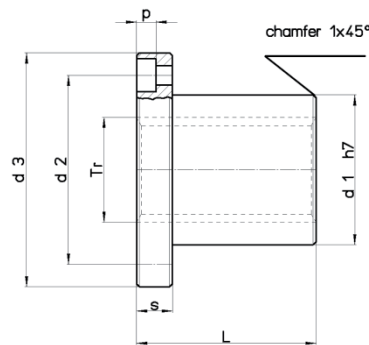


PIULIȚĂ DE BRONZ CU FLANȘĂ FLANGED BRONZE NUT

Material bronz
Material bronz

Sudabil ---
Weldable ---

Tip FTN (79.015)
Type FXN (79.023)
FFR (79.024)



≥ Tr 24x5 (79.015 ; 79.023)
Tr 10x2 - 50x8 (79.024) ≤ Tr 22x5 (79.015 ; 79.023)

Cod code		Ø x Pas Ø x Lead	Începu- turi Thread starts	d1 mm	d2 mm	d3 mm	d4 mm	d5 mm	p mm	L mm	s mm	Greutate Weight (kg)	At* mm ²
dreapta right	stânga left												
79.024.009	79.024.007	Tr 10x2	1	25	34	42	5,0	--	--	25	10	0,016	250
79.015.004	79.015.002	Tr 10x3	1	18	26	37	4,5	7,5	4,2	22	8	0,088	294
79.015.015	79.015.012	Tr 12x3	1	18	26	37	4,5	7,5	4,2	22	8	0,082	362
79.024.014	79.024.011	Tr 12x3	1	28	38	48	6,0	--	--	35	12	0,276	400
79.023.019	---	Tr 12x6 (P3)	2	18	26	37	4,5	7,5	4,2	22	8	0,082	362
79.024.032	79.024.029	Tr 14x3	1	28	38	48	6,0	--	--	35	12	0,272	460
79.015.024	79.015.021	Tr 14x4	1	20	30	42	5,5	9	5,2	25	10	0,123	470
79.015.039	79.015.036	Tr 16x4	1	22	32	45	5,5	9	5,2	30	10	0,149	660
79.024.038	79.024.035	Tr 16x4	1	28	38	48	6,0	--	--	35	12	0,260	530
79.023.043	---	Tr 16x8 (P4)	2	22	32	45	5,5	9,5	5,2	30	10	0,149	660
79.015.048	79.015.045	Tr 18x4	1	25	35	48	5,5	9	5,2	35	10	0,188	880
79.015.057	79.015.054	Tr 20x4	1	30	40	52	5,5	9	5,2	40	10	0,267	1130
79.024.056	79.024.053	Tr 20x4	1	32	45	55	6,5	--	--	44	12	0,370	870
79.023.061	---	Tr 20x8 (P4)	2	30	40	52	5,5	9,5	5,2	40	10	0,267	1130
79.023.064	---	Tr 20x20 (P5)	4	30	40	52	5,5	9,5	5,2	40	10	0,270	1100
79.015.069	79.015.066	Tr 22x5	1	30	40	52	5,5	9	5,2	40	10	0,247	1225
79.024.068	79.024.065	Tr 22x5	1	32	45	55	6,5	--	--	44	12	0,360	1030
79.023.079	79.023.076	Tr 24x5	1	35	48	62	6,5	11,0	6,5	45	12	0,408	1520
79.024.077	79.024.074	Tr 24x5	1	32	45	55	6,5	--	--	44	12	0,337	1040
79.015.087	79.015.084	Tr 25x5	1	35	48	62	6,5	11	6,5	45	12	0,393	1590
79.023.091	---	Tr 25x10 (P5)	2	35	48	62	6,5	11	6,5	45	12	0,393	1590
79.023.094	---	Tr 25x25 (P5)	5	35	48	62	6,5	11	6,5	45	12	0,393	1590
79.015.111	79.015.108	Tr 28x5	1	40	53	68	6,5	11	6,5	50	12	0,532	2000
79.023.115	---	Tr 28x10 (P5)	2	40	53	68	6,5	11	6,5	50	12	0,532	2000
79.015.117	79.015.118	Tr 30x3	1	40	53	68	6,5	11	6,5	50	12	0,482	2238
79.015.120	79.015.124	Tr 30x4	1	40	53	68	6,5	11	6,5	50	12	0,487	2200
79.015.127	79.015.130	Tr 30x5	1	40	53	68	6,5	11	6,5	50	12	0,492	2160