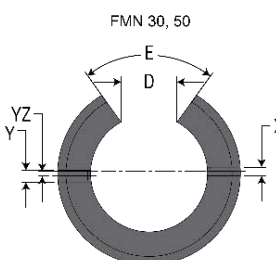
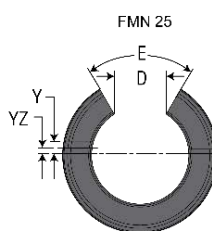
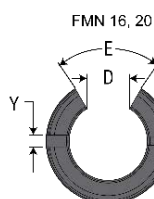
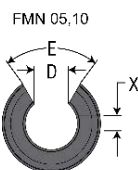
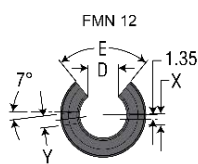
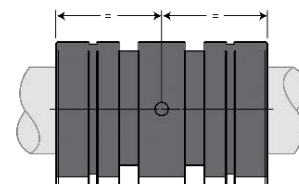
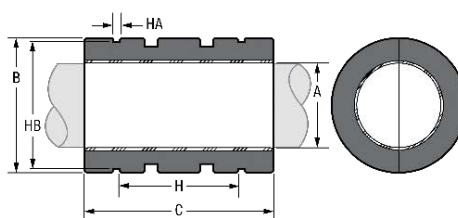




TIP FMN / FMNC  
FMN / FMNC TYPE



Cod Code	Tip Type	Nom. Ø Nom. Ø	A		B		C		D	E	Concentri- tatea Concen- tricity	H	HA	HB	X	Y	YZ	Sarcină Load	Greutate Weight			
			min	max	min	max	min	max														
(mm)																						
<b>FMN - seria de precizie / precision series</b>																						
84.043.022	FMN 05	5	5,010	5,028	11,982	12	21,619	22	3	60	0,0254	12	1,14	11,5	2,2	-	-	2276	3,4			
84.043.003	FMN 08	8	8,013	8,035	15,982	16	24,619	25	5		0,0254	14	1,14	15,2				3	-	-	4120	7,7
84.043.004	FMN 10	10	10,013	10,035	18,979	19	28,619	29	6		0,0254	19,4	1,32	18							5984	11,9
84.043.005	FMN 12	12	12,016	12,043	21,979	22	31,619	32	8	78	0,0254	20	1,32	21	2,2	3	7	7907	15,6			
84.043.007	FMN 16	16	16,016	16,043	25,979	26	35,619	36	10		0,0254	22	1,32	24,9				0	11870	21,3		
84.043.009	FMN 20	20	20,020	20,053	31,975	32	44,619	45	11	60	0,0254	28	1,63	30,3					3	1,5	18541	43,9
84.043.011	FMN 25	25	25,020	25,053	39,975	40	57,619	58	13		0,0254	40	1,9	37,5	1,5	29881	89,3					
84.043.013	FMN 30	30	30,020	30,053	46,975	47	67,619	68	14		72	0,0254	48	1,9		44,5	3	2			42026	146
84.043.015	FMN 40	40	40,025	40,064	61,970	62	79,619	80	20	0,0254		56	2,2	59	1,5	65923			294,8			
84.043.016	FMN 50	50	50,025	50,640	74,970	75	99,619	100	24	0,0254		72	2,7	72		5			2,5	103005	520,2	
<b>FMNC - seria compensată / compensated series</b>																						
84.055.022	FMNC 05	5	5,060	5,078	11,982	12	21,619	22	3	60	0,0254	12	1,14	11,5	2,2	-	-	2276	3,4			
84.055.003	FMNC 08	8	8,063	8,085	15,982	16	24,619	25	5		0,0254	14	1,14	15,2				3	-	-	4120	7,7
84.055.004	FMNC 10	10	10,063	10,085	18,979	19	28,619	29	6		0,0254	19,4	1,32	18							5984	11,9
84.055.005	FMNC 12	12	12,066	12,093	21,979	22	31,619	32	8	78	0,0254	20	1,32	21	2,2	3	7	7907	15,6			
84.055.007	FMNC 16	16	16,066	16,093	25,979	26	35,619	36	10		0,0254	22	1,32	24,9				0	11870	21,3		
84.055.009	FMNC 20	20	20,096	20,129	31,975	32	44,619	45	11	60	0,0254	28	1,63	30,3					3	1,5	18541	43,9
84.055.011	FMNC 25	25	25,096	25,129	39,975	40	57,619	58	13		0,0254	40	1,9	37,5	1,5	29881	89,3					
84.055.013	FMNC 30	30	30,096	30,129	46,975	47	67,619	68	14		72	0,0254	48	1,9		44,5	3	2			42026	146
84.055.015	FMNC 40	40	40,127	40,166	61,970	62	79,619	80	20	0,0254		56	2,2	59	1,5	65923			294,8			
84.055.016	FMNC 50	50	50,127	50,166	74,970	75	99,619	100	24	0,0254		72	2,7	72		5			2,5	103005	520,2	

**Material:** aluminiu anodizat      **Material:** anodized aluminium  
**Acoperire interioară:** Frelon Gold      **Internal coating:** Frelon Gold