

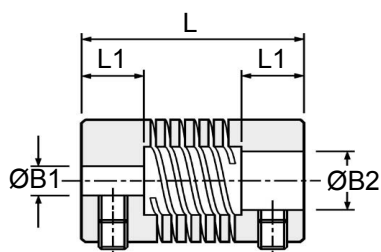


POWER BELT®

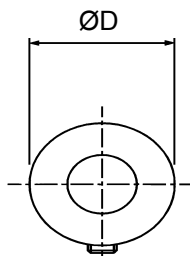
Ro, 400220 Cluj-Napoca
 Str. Romulus Vuia nr. 227
 Tel.: 0264-432448 Fax: 0264-585589
 Mobil: 0747 871134

web: www.powerbelt.ro, e-mail: office@powerbelt.ro

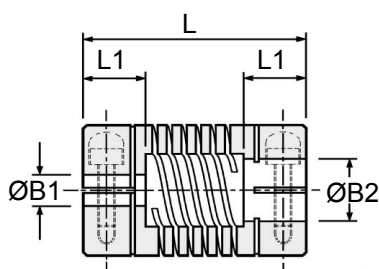
Varianta cu stift filetat



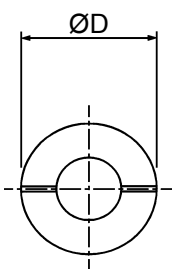
varianta cu 3 inceputuri



Varianta cu butuc crestat



varianta cu 3 inceputuri



Caracteristici tehnico-dimensionale

Tip	Cod produs		ØD	L	L1	Diametru alezaj			Stift	Surub DIN 912	Abatere a ungh.	Abat. de la parelel. Mm	Moment Nm
	Cu stift filetat	Cu butuc crestat				Min. B1	Min. B2	Max. B1&B2					
06	724.06	-	6.4	12.7	3.2	1.0	2.0	3.0	M2	-	3	0.07	0.40
09	724.09	-	9.5	14.2	4.5	2.0	3.0	3.18	M2.5	M1.6	3	0.1	0.40
	-	725.09											
13	724.13	-	12.7	19.1	6.0	3.0	4.0	5.0	M3	M2	5	0.127	0.90
	-	725.13											
16	724.16	-	15.9	20.3	6.5	3.0	4.0	6.35	M4	M2.5	5	0.127	1.50
	-	725.16											
19	724.19	-	19.1	22.9	6.5	4.0	4.76	8.0	M4	M2.5	5	0.127	2.50
	-	725.19											
25	724.25	-	25.4	31.8	9.0	5.0	6.0	10.0	M5	M3	5	0.127	4.0
	-	725.25											
32	724.32	-	31.8	44.5	12.0	6.0	8.0	14.0	M6	M4	5	0.127	6.0
	-	725.32											

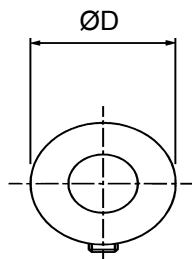
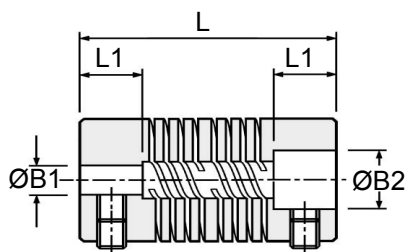
Material:

Cuplaj: aluminiu L 168
 Suruburi: otel, brunat

Domeniu de temperatura: -40°C to +120°C

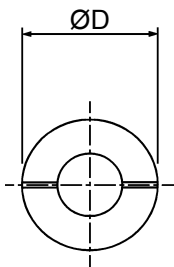
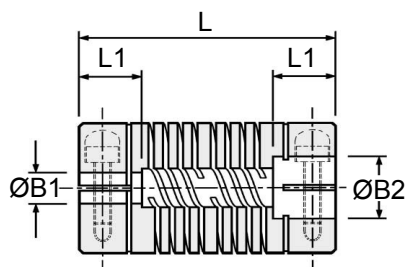


Varianta cu stift filetat



varianta cu 6 inceputuri

Varianta cu butuc crestat



varianta cu 6 inceputuri

Caracteristici tehnico-dimensionale

Tip	Cod produs		ØD	L	L1	Diametru alezaj			Stift	Surub DIN 912	Abaterea ungh. °	Abat. de la parelel. Mm	Moment Nm
	Cu stift filetat	Cu butuc crestat				Min. B1	Min. B2	Max. B1&B2					
09	706.09	-	9.5	19.6	5.3	2.0	4.0	4.76	M2.5	M1.6	3	0.12	1.0
	-	707.09											
13	706.13	-	12.7	22.9	6.5	3.0	5.0	6.35	M3	M2	5	0.17	2.0
	-	707.13											
16	706.16	-	15.9	25.4	6.5	3.0	6.0	8.0	M4	M2.5	5	0.2	3.4
	-	707.16											
19	706.19	-	19.1	26.5	6.5	4.76	6.35	10.0	M4	M2.5	7	0.25	5.3
	-	707.19											
25	706.25	-	25.4	38.1	11.0	5.0	8.0	12.7	M5	M3	7	0.38	10.0
	-	707.25											
32	706.32	-	31.8	57.2	16.0	8.0	10.0	19.0	M6	M4	7	0.5	15.0
	-	707.32						16.0					
38	706.38	-	38.1	66.7	18.0	8.0	12.0	22.0	M6	M5	7	0.6	22.0
	-	707.38						19.0					
44	706.44	-	44.5	76.2	20.0	9.0	14.0	25.0	M6	M5	7	0.8	30.0
	-	707.44						22.0					
51	706.51	-	50.8	95.3	25.0	10.0	16.0	28.0	M8	M6	7	0.9	40.0
	-	707.51						26.0					
57	706.57	-	57.2	130.0	32.0	10.0	20.0	32.0	M8	M6	7	0.95	55.0
	-	707.57						30.0					
64	706.64	-	63.5	150.0	38.0	12.0	25.0	38.0	M8	M8	7	1.0	75.0
	-	707.64						36.0					

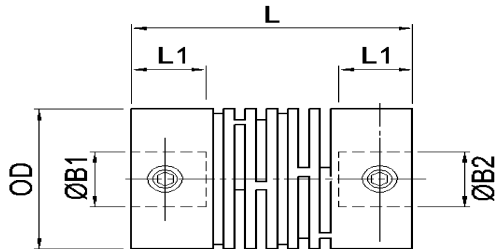
Material:

Cuplaj: aluminiu L 168
 Suruburi: otel, brunat

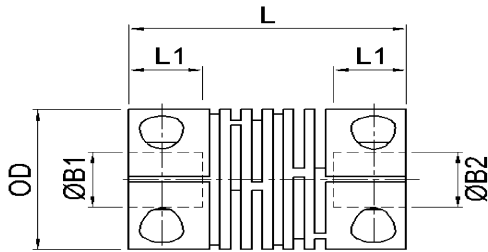
Domeniu de temperatura: -40°C to +120°C



Varianta cu stift filetat



Varianta cu butuc crestat



Dimensiuni pentru varianta din material plastic

Tip	Cod produs		Dimensiuni						Suruburi			
	Stift filetat	Crestat	ØD	L	L1	Min. B1	Max. B2	Masa x10 ⁻³ g	Sift	Surub DIN 912	Moment strangere Ncm	A/F mm
13	636.13	-	13	18	5.0	3	6.35	3.0	M2	-	0.08	0.9
	-	637.16							-	M2	0.23	1.5
19	636.19	-	19	28	8.0	3	9.53	7.5	M3	-	0.32	1.5
	-	637.19							-	M2.5	0.51	2.0
25	636.25	-	25	36	10.0	6	12.7	17.4	M4	-	1.05	2.0
	-	637.25							-	M3	0.90	2.5

Date tehnice

Tip	Momentul nominal Nm	Rigiditatea la torsiune Nm/rad	Abateri compensate		
			Unghi °	Radial mm	Axial mm
13	0.25	5.5	3	0.15	0.2
19	0.8	12.0	4	0.15	0.2
25	2.5	18.0	5	0.3	0.3

Material:

Cuplaj: polimer tip nylon
Suruburi: oțel inoxidabil
Dom. de temperatura: -20°C to +150°C

Date tehnice

Tip	+0,05 / -0mm												
	3	3.175	4	4.763	5	6	6.350	7.938	8	9.525	10	12	12.70
13	•	•	•	•	•	•	•						
19			•	•	•	•	•	•	•	•			
25						•	•	•	•	•	•	•	•
Cod alezaj	14	16	18	19	20	22	24	27	28	31	32	35	36