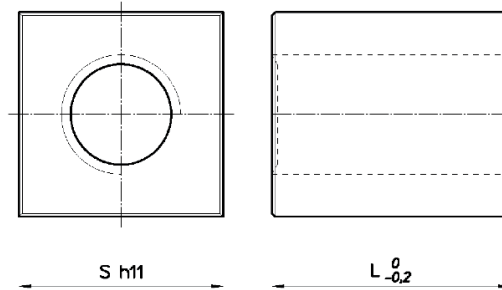


## PIULIȚĂ PĂTRATĂ DIN OȚEL SQUARE STEEL NUT



**Material  
Material**

oțel  
steel

**Sudabil  
Weldable**

numai cu sudură MIG-MAG  
only MIG-MAG welding

**Tip  
Type**

CQA (79.018)

Cod Code		Ø x Pas Ø x Lead	Începuturi Thread starts	S mm	L mm	Greutate Weight (kg)	At* mm <sup>2</sup>
dreapta right	stânga left						
79.018.009	79.018.007	Tr 10x2	1	17	15	0,027	150
79.018.014	79.018.011	Tr 12x3	1	25	30	0,123	616
79.018.032	79.018.029	Tr 14x3	1	25	20	0,230	658
79.018.023	79.018.020	Tr 14x4	1	30	35	0,211	658
79.018.038	79.018.035	Tr 16x4	1	30	35	0,199	770
79.018.047	79.018.044	Tr 18x4	1	35	45	0,353	1131
79.018.056	79.018.053	Tr 20x4	1	40	50	0,517	1412
79.018.086	79.018.083	Tr 25x5	1	45	55	0,683	1943
79.018.135	79.018.132	Tr 30x6	1	50	60	0,877	2544
79.018.174	79.018.171	Tr 35x6	1	60	70	1,494	3517
79.018.183	79.018.180	Tr 36x6	1	60	70	1,465	3630
79.018.210	79.018.207	Tr 40x7	1	60	70	1,347	4013
79.018.261	79.018.258	Tr 50x8	1	70	90	2,183	6502
79.018.273	79.018.270	Tr 60x9	1	80	100	2,990	8718

\* Suprafață de contact între șurub și piuliță      Contact surface between the screw and nut