

HANDLE WITH TUBE D. 30 BLACK WITH VERTICAL ENDS

B351



Materials:

- (1) Reinforced polyamide for support for tube. Oils and greases resistant.
- (2) Anodised aluminium alloy 6060 tube.
- (3) Turned round aluminium insert with threaded hole M08 for fastening TCCE screw.
- (4) Black oxide threaded screw TCCE M08x70 (DIN 912).
- (5) Winged snap-fit LDPE tube cap.

Surfaces:

- (1-5) Satin.
- (2) Shiny anodised.

Colours:

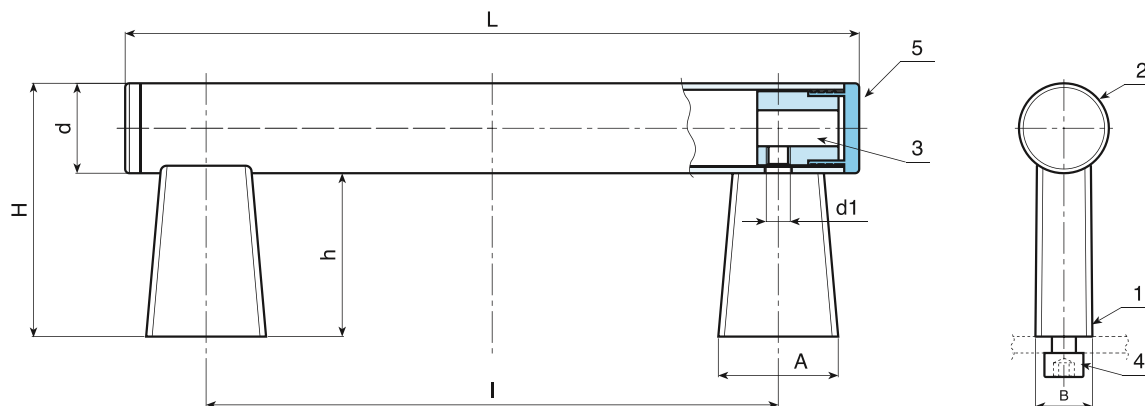
- (1-5) Black (RAL 9011).
- (2) Painted with black epoxy powder black (marbled).

NOTE: The handle is supplied unassembled in single packs.



SPECIAL REQUEST:

- None.



art.	l	L	D	H	h	A	B	d1	g
B351150.TG300198	150	196	30	85	55	40	19	M08	270
B351200.TG300198	200	246	30	85	55	40	19	M08	290
B351250.TG300198	250	296	30	85	55	40	19	M08	309
B351300.TG300198	300	346	30	85	55	40	19	M08	327
B351350.TG300198	350	396	30	85	55	40	19	M08	345
B351400.TG300198	400	446	30	85	55	40	19	M08	363
B351500.TG300198	500	546	30	85	55	40	19	M08	400
B351600.TG300198	600	646	30	85	55	40	19	M08	436
B351700.TG300198	700	746	30	85	55	40	19	M08	473

Presumable presence in the stock in %

() 90% (●) 40% (●) 5% (●)

BOTECO® - © All right reserved - www.boteco.it
Any unauthorized reproduction is strictly forbidden



BOTECO